

MIDWEST MA30-EV PARAGON™ SERIES VACUPAC™ I SYSTEM

DETAILS ARE SUBJECT TO CHANGE WITHOUT PRIOR NOTICE.
CAUTION: EXPLOSION PROOF CONSTRUCTION AVAILABLE
CONSULT FACTORY FOR DETAILS AND PRICING
NOTE: ITEMS CHECKED WILL BE QUOTED BY MIDWEST

LEGEND

- █ DRIVE COMPONENTS
- █ AIR WITHDRAWAL LUGS, FANS, DUST OUTLETS, FAST PILING AND FLEXIBLE OUTER SPOUT
- █ OUTER SCAVENGER
- █ PRODUCT FLOW AREA
- █ INSTRUMENTATION AND UTILITIES
- █ BACK OTHER

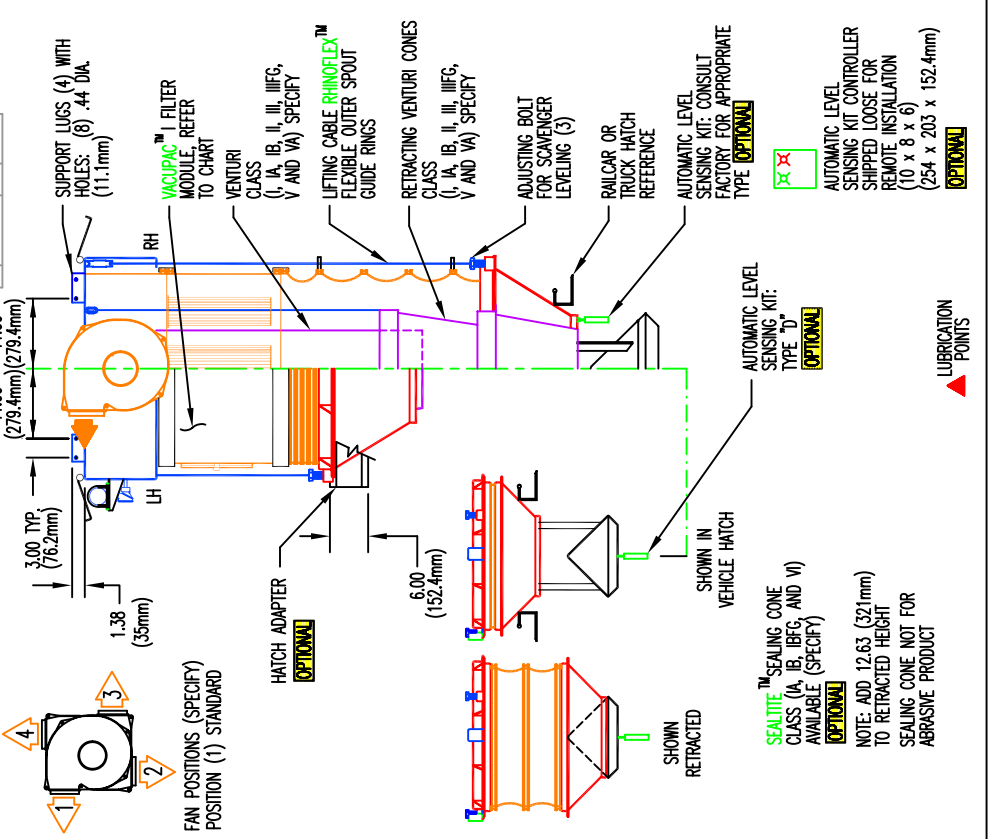
AVAILABLE CLEAN AIR FANS @ 5" SPWG		
MODEL	HP	CFM
MPB9	.75	300
MPB10A	1.5	500
MPB10A	2.0	800
MPB12A	3.0	1000
MPB14A	5.0	1250
MPB14A	5.0	1500
MPB15	7.5	1800
MPB15	7.5	2100
MPB15	7.5	2500

FILTER CARTRIDGES MIDWEST POLYTEX™ "V" PLEAT 5.5" DIA.			
MODEL	FAN	FILTER AREA	A/C RATIO
MA30 EV	C	(-)	:1

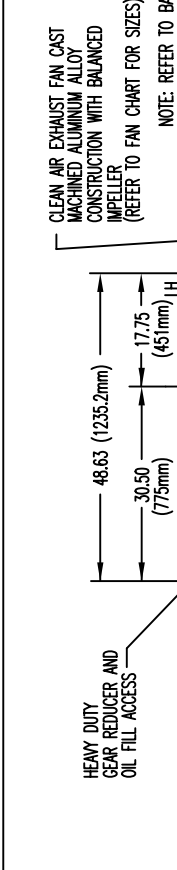
UNIT MODEL NUMBER	FAN FACTOR
(1.0) WIDE "V" PLEAT: 46 PLEATS 1.13 IN DEEP .44 SPACING	
(1.5) "V" PLEAT: 60 PLEATS 1.13 IN DEEP .29 SPACING	
(2.0) "V" PLEAT: 80 PLEATS 1.13 IN DEEP .22 SPACING	



FAN POSITIONS (SPECIFY POSITION (1) STANDARD)



NOTE: ADD 12.63 (321mm) TO RETRACTED HEIGHT SEALING CONE NOT FOR ABRASIVE PRODUCT



CLEAN AIR EXHAUST FAN CAST MACHINED ALUMINUM ALLOY CONSTRUCTION WITH BALANCED IMPELLER (REFER TO FAN CHART FOR SIZES)

NOTE: REFER TO BACK OF THIS DRAWING FOR TECHNICAL DATA

MD 30 PRODUCT INLET: 15 IN. DIA. (381mm)
 BOLT PATTERN: (Ø) .37 (9.3mm) x 1 IN. (25.4mm) STUDS ON A 17 IN. (431.8mm) B.C.

COMPRESSED AIR PURGING SYSTEM, 1" NPT INLET 20 CFM AT STANDARD PULSE TIME SETTINGS 80 TO 100 PSI REQUIRED

SLACK CABLE LIMIT SWITCH KIT: (2) SWITCHES PROVIDED (NEMA 4, 7 OR 9) (SPECIFY) [OPTIONAL]

PURGE CONTROLLER ENCLOSURE NEMA 4X (14 X 12 X 6) SOLID STATE PULSE CONTROL VACUUM GAUGE CONTINUOUS CLEAN WITH SLACK CABLE OR FAN "ON" (STANDARD)

STAINLESS STEEL ANTISTATIC LINE WITH GROUNDING LUGS **CAUTION: MUST BE GROUNDED** CAST MACHINED LIFTING RING

AIR VIBRATOR KIT: CONSISTING OF (2) VIBRATORS WITH SOLENOID VALVE AIR CONSUMPTION 6 C.F.M. @ .35/45 P.S.I. TOTAL FOR BOTH AIR VIBRATORS INTERMITTENT REQUIREMENT [OPTIONAL]

ROTATING LIMIT SWITCH FOR UPPER AND LOWER LIMITS, STANDARD NEMA 4, 2 POSITION SPDT XP AND 3RD INTERMEDIATE POSITION AVAILABLE [OPTIONAL]

IMPORTANT: "UP" LIMIT SWITCH POSITION MUST BE FIELD ADJUSTED ACCORDING TO PRINTED MIDWEST INSTRUCTIONS OR WARRANTY IS VOID

HINGED ACCESS DOOR

JUNCTION BOX FOR PREWIRING OF LIMIT SWITCHES AND ACCESSORIES [OPTIONAL]

MOTOR PREP WIRE JUNCTION BOX [OPTIONAL]

HEAVY DUTY GEAR REDUCER AND OIL FILL ACCESS

(3) CAST DUCTILE MACHINED LIFT PULLEYS

3.00 TYP (76.2mm)

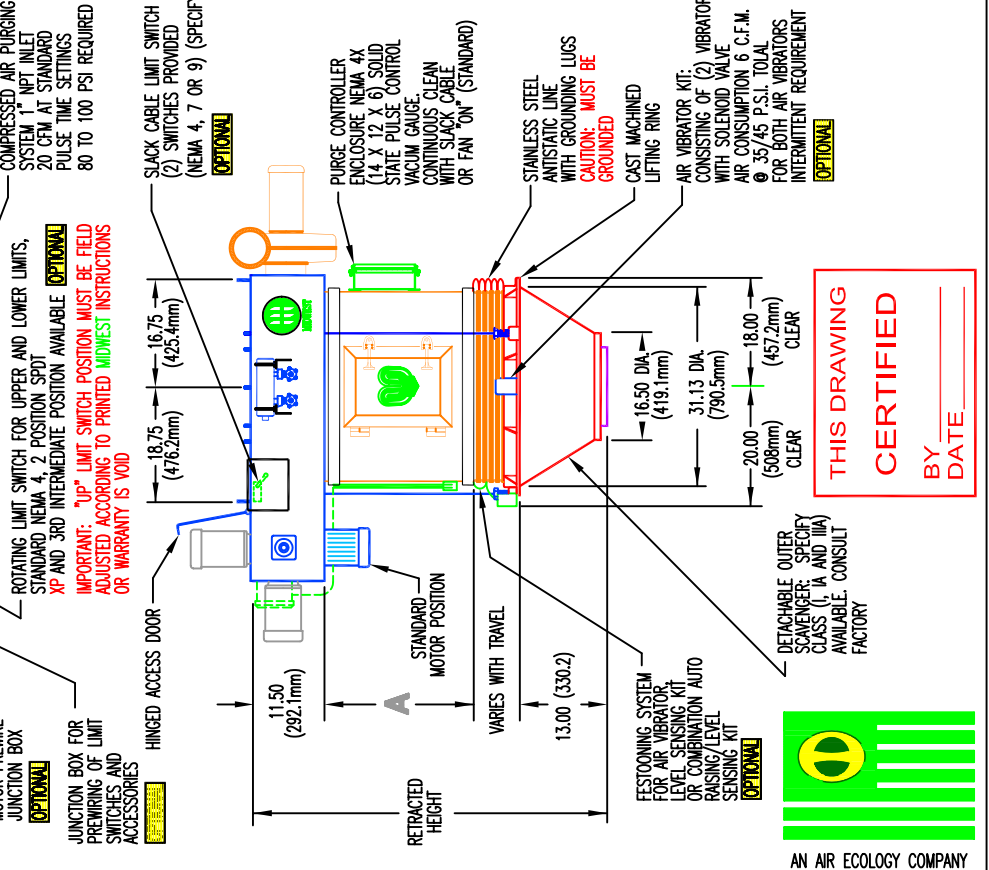
11.50 (292.1mm)

13.00 (330.2)

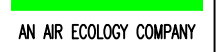
VARIES WITH TRAVEL

FESTOONING SYSTEM FOR AIR VIBRATOR, LEVEL SENSING KIT OR COMBINATION AUTO RAISING/LEVEL SENSING KIT [OPTIONAL]

DETACHABLE OUTER SCAVENGER: SPECIFY CLASS (I, IA AND IIA) AVAILABLE. CONSULT FACTORY.



THIS DRAWING CERTIFIED BY DATE



Midwest International
 Environmental Equipment for industry

Operational Headquarters
 Midwest Plaza, 105 Slaver Rd.
 Charlevoix, Michigan 49720

Phone (231) 547-4000
 Fax (231) 547-9453
 a division of ron pair enterprises, inc.

REF. SERIAL NO. JOB NO. SHEET NO. DRAWING NO. MA30EVA

PREPARED FOR: P.O. NO. TITLE: MA-EV VACUPAC™ SERIES RETRACTABLE BULK LOADING SPOUT FOR ENCLOSED VEHICLES
 DATE: DRAWN: KC DATE: 07 FEB 00 CHECKED: RP/REM

This drawing and/or publication represents proprietary article and the designs, trade names or trademarks therein are either patented, have patents pending or are copyrighted internationally. Information appearing on this document remains the property of Ron Pair Enterprises, Inc. and is not to be reproduced without written authorization from an officer of this corporation.

NO.	DATE:
A-	03 MAY 00
A-	08 NOV 01