

# MIDWEST MA30-OV PARAGON™ SERIES VACUPAC™ I SYSTEM

DETAILS ARE SUBJECT TO CHANGE WITHOUT PRIOR NOTICE.  
**CAUTION: EXPLOSION PROOF CONSTRUCTION AVAILABLE.**  
**CONSULT FACTORY FOR DETAILS AND PRICING.**  
**NOTE: ITEMS CHECKED WILL BE QUOTED BY MIDWEST**

**LEGEND**

- DRIVE COMPONENTS
- AIR INTAKE/EXHAUST FANS, AIR FILTERS, AIR CLEANERS, AIR SEPARATORS, AIR FLOW SPOUT
- OUTER SCAVENGER
- PRODUCT FLOW AREA
- INSTALLATION AND UTILITIES
- OTHER

MODEL	CFM	A	IN	MM	A/C RATIO	FAN	FACTOR	UNIT MODEL NUMBER
MA30 OV					:1			

AVAILABLE CLEAN AIR FANS @ 5" SPWG	MODEL	HP	CFM
	MPB9	1.5	300
	MPB10A	1.5	500
	MPB10A	2.0	800
	MPB12A	3.0	1000
	MPB14A	5.0	1500
	MPB15	7.5	1800
	MPB15	7.5	2100
	MPB15	7.5	2500

UNIT MODEL NUMBER	UNIT MODEL NUMBER
11.00 (279.4mm)	11.00 (279.4mm)
11.00 (279.4mm)	11.00 (279.4mm)

NOTE: REFER TO BACK OF THIS DRAWING FOR TECHNICAL DATA

CLEAN AIR EXHAUST FAN CAST MACHINED ALUMINUM ALLOY CONSTRUCTION WITH BALANCED IMPELLER (REFER TO FAN CHART FOR SIZES)

NO 30 PRODUCT INLET: 15 IN. DIA. (381mm)  
 BOLT PATTERN: (6) .37 (9.3mm) x 1 IN. (25.4mm) STUDS ON A 17 IN. (431.8mm) B.C.

COMPRESSED AIR PURGING SYSTEM, 1" NPT INLET 20 CFM AT STANDARD PULSE TIME SETTINGS 80 TO 100 PSI REQUIRED

SLACK CABLE LIMIT SWITCH KIT: (2) SWITCHES PROVIDED (NEMA 4, 7 OR 9) (SPECIFY) **OPTIONAL**

PURGE CONTROLLER ENCLOSURE NEMA 4X (14 X 12 X 6) SOLID STATE PULSE CONTROL VACUUM GAUGE CONTINUOUS CLEAN WITH SLACK CABLE OR FAN ON (STANDARD)

STAINLESS STEEL ANTISTATIC LINE WITH GROUNDING LUGS **CAUTION: MUST BE GROUNDED** CAST MACHINED LIFTING RING

AIR VIBRATOR KIT: CONSISTING OF (2) VIBRATORS WITH SOLENOID VALVE AIR CONSUMPTION 6 C.F.M. @ .35/45 P.S.I. TOTAL FOR BOTH AIR VIBRATORS INTERMITTENT REQUIREMENT **OPTIONAL**

ROTATING LIMIT SWITCH FOR UPPER AND LOWER LIMITS, STANDARD NEMA 4, 2 POSITION SPDT XP AND 3RD INTERMEDIATE POSITION AVAILABLE **OPTIONAL**

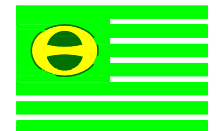
**IMPORTANT: "UP" LIMIT SWITCH POSITION MUST BE FIELD ADJUSTED ACCORDING TO PRINTED MIDWEST INSTRUCTIONS OR WARRANTY IS VOID**

JUNCTION BOX FOR PREWIRING OF LIMIT SWITCHES AND ACCESSORIES **OPTIONAL**

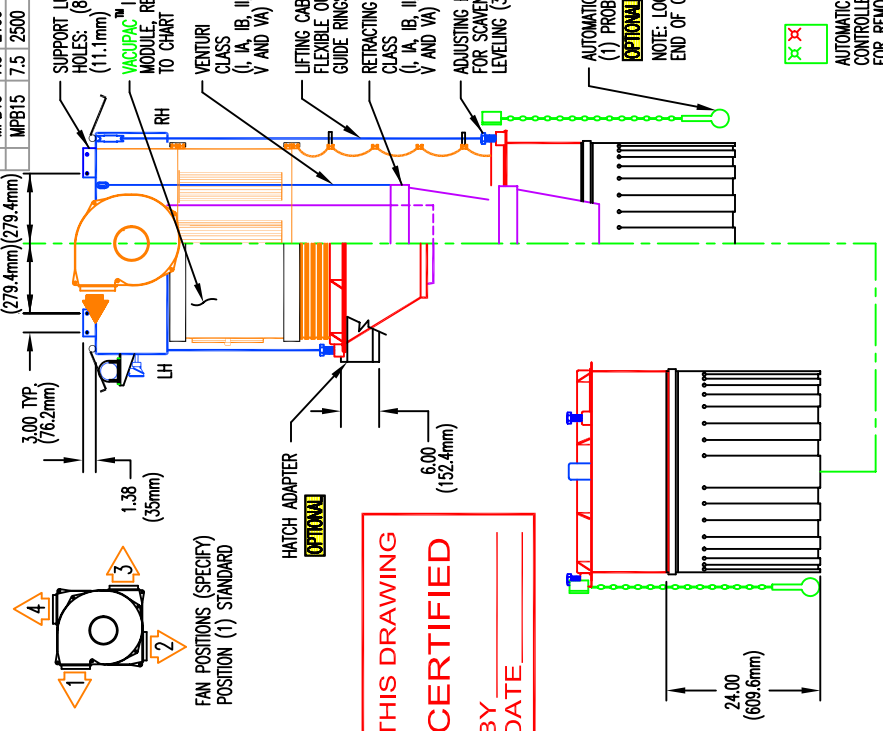
STANDARD MOTOR POSITION VARIES WITH TRAVEL

FESTOONING SYSTEM FOR AIR VIBRATOR, LEVEL SENSING KIT OR COMBINATION AUTO RAISING/LEVEL SENSING KIT **OPTIONAL**

DETACHABLE OUTER SCAVENGER: SPECIFY CLASS (I, IA AND IIA) AVAILABLE. CONSULT FACTORY



AN AIR ECOLOGY COMPANY

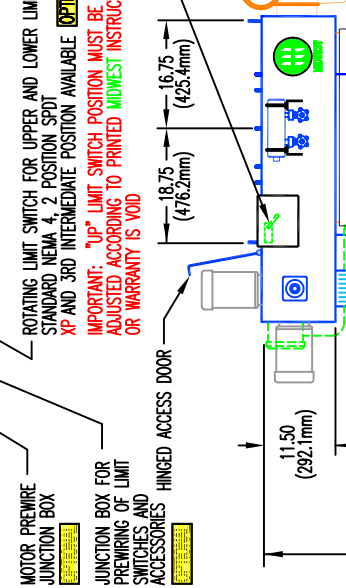
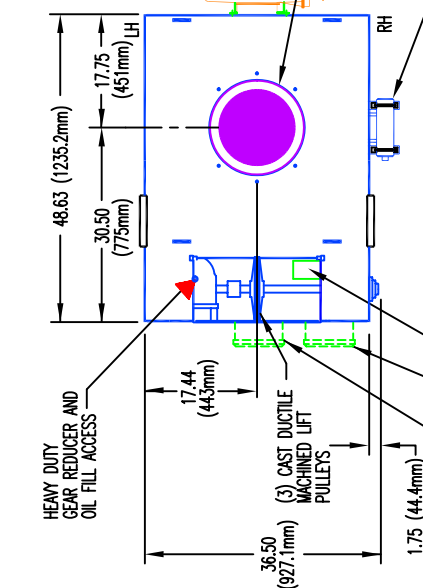


**THIS DRAWING IS CERTIFIED BY DATE**

**OPTIONAL**

AUTOMATIC RAISING KIT CONTROLLER SHIPPED LOOSE FOR REMOTE INSTALLATION (10 x 8 x 6) (254 x 203 x 152.4mm) **OPTIONAL**

LUBRICATION POINTS



Operational Headquarters  
 Midwest Plaza, 105 Slaver Rd.  
 Charlevoix, Michigan 49720  
 Phone (231) 547-4000  
 Fax (231) 547-9453  
 a division of ron pair enterprises, inc.

REF. SHEET NO.  
 JOB NO.  
 SHEET NO.  
 DRAWING NO. MA300VA

PREPARED FOR:  
 P.O. NO.  
 DATE:  
 TITLE: MA-OV VACUPAC™ SERIES RETRACTABLE BULK LOADING SPOUT FOR OPEN VEHICLES  
 DRAWN: KC DATE: 07 FEB 00 CHECKED: RP/REM

This drawing and/or publication represents proprietary article and the designs, trade names or trademarks therein are either patented, have patents pending or are copyrighted internationally. Information appearing on this document remains the property of Ron Pair Enterprises, Inc. and is not to be reproduced without written authorization from an officer of this corporation.

REVISION	
NO.	DATE:
A-	03 MAY 00
B	08 NOV 01