

MA36 EV PARAGON™ SERIES VACUPAC I SYSTEM

DETAILS ARE SUBJECT TO CHANGE WITHOUT PRIOR NOTICE.
CAUTION: EXPLOSION PROOF CONSTRUCTION AVAILABLE
CONSULT FACTORY FOR DETAILS AND PRICING
 NOTE: ITEMS CHECKED WILL BE QUOTED BY MIDWEST

LEGEND
 BLUE FAN COMPONENTS
 ORANGE AIR INTAKE/EXHAUST FANS
 LIGHT GREEN DUST OUTLET, DUST PRING AND FLEXIBLE OUTER SPOUT
 RED OUTER SCRAWNER
 PURPLE PRODUCT FLOW AREA
 GREEN INSTRUMENTATION AND UTILITIES
 BLACK OTHER

CLEAN AIR EXHAUST FAN CAST MACHINED ALUMINUM ALLOY CONSTRUCTION WITH BALANCED IMPELLER (REFER TO FAN CHART FOR SIZES)
 NOTE: REFER TO BACK OF THIS DRAWING FOR TECHNICAL DATA

AVAILABLE CLEAN AIR FANS @ 5" SPWG	MODEL	HP	CFM
MPB8	1.75	300	
MPB10A	1.5	500	
MPB12A	3.0	1000	
MPB14A	5.0	1500	
MPB15	7.5	1800	
MPB15	7.5	2100	
MPB15	7.5	2500	

CFM	A	A/C RATIO
IN	MM	:
300	19.75	:1
500	30.00	
1000	47.25	
1500	70.88	
1800	84.00	
2100	98.44	
2500	114.30	

MODEL	FAN FACTOR	UNIT MODEL NUMBER
MA36 EV <td>() - C</td> <td></td>	() - C	

FILTER CARTRIDGES MIDWEST POLYFLEX™ V PLEAT 5.5" DIA.
 (1.0) WIDE V PLEAT: 46 PLEATS 1.13 IN DEEP .44 SPACING
 (1.5) V PLEAT: 60 PLEATS 1.13 IN DEEP .29 SPACING
 (2.0) V PLEAT: 80 PLEATS 1.13 IN DEEP .22 SPACING

MA36 PRODUCT INLET:
 18" IN. DIA. (457.2mm)
 (8) .56 (14.2mm) X 1/8" (25.4mm) STUDS ON A 20.00 IN. (508mm) B.C.

OPTIONAL

COMPRESSED AIR PURGING SYSTEM 1" NPT INLET 20 CFM AT STANDARD PULSE TIME SETTINGS 80 TO 100 PSI REQUIRED

SLACK CABLE LIMIT SWITCH KIT: (2) SWITCHES PROVIDED (NEMA 4, 7 OR 9) SPECIFY

PURGE CONTROLLER ENCLOSURE NEMA 4X STATE PULSE CONTROL VACUUM GAUGE CONTINUOUS CLEAN WITH SLACK CABLE OR OR FAN "ON" STANDARD

STAINLESS STEEL ANTISTATIC LINE WITH GROUNDING LUGS **CAUTION: MUST BE GROUNDED** CAST MACHINED LIFTING RING

AIR VIBRATOR KIT: CONSISTING OF (2) VIBRATORS WITH SOLENOID VALVE AIR CONSUMPTION 6 C.F.M. @ 35 /45 P.S.I. TOTAL FOR BOTH AIR VIBRATORS. INTERMITTENT REQUIREMENT

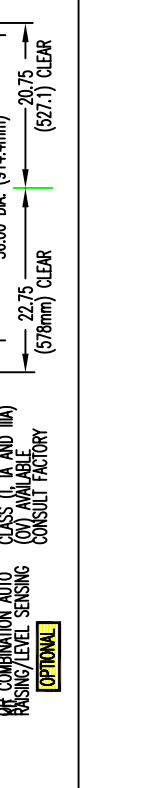
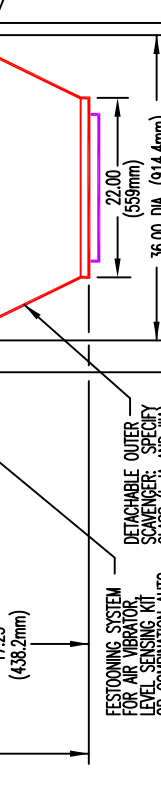
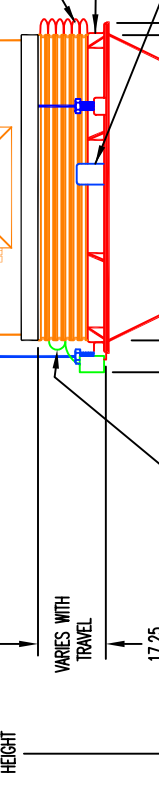
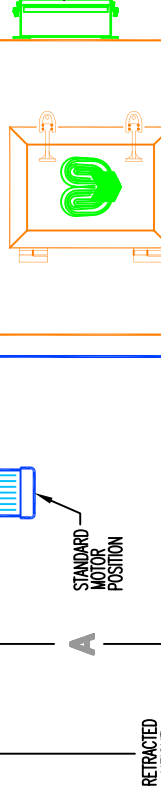
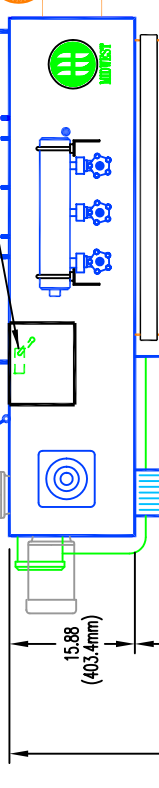
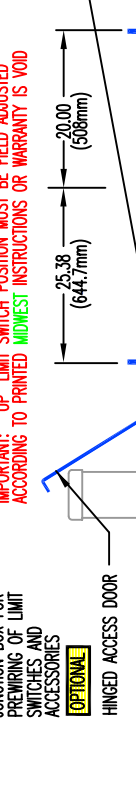
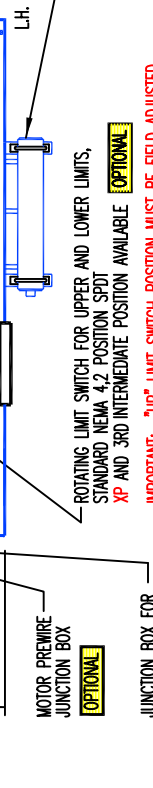
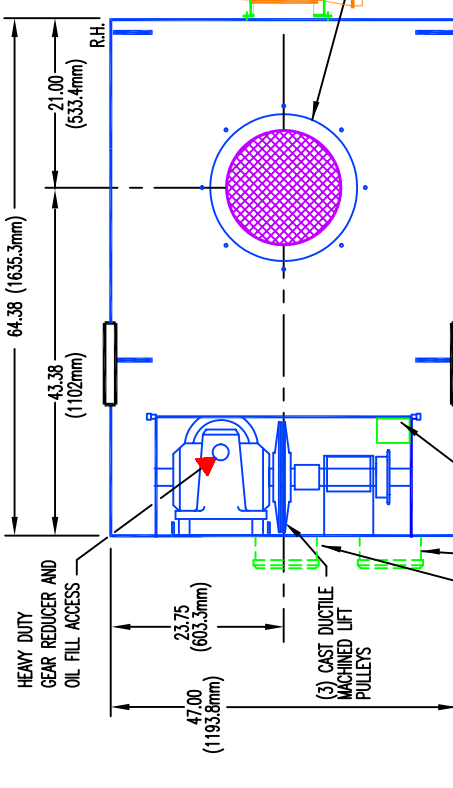
OPTIONAL

DETECTABLE OUTER SCRAWNER: SPECIFY AIR COMBINATION AUTO RANSING/LEVEL SENSING

OPTIONAL

FESSTOONING SYSTEM FOR AIR VIBRATOR LEVEL SENSING KIT OR COMBINATION AUTO RANSING/LEVEL SENSING

OPTIONAL



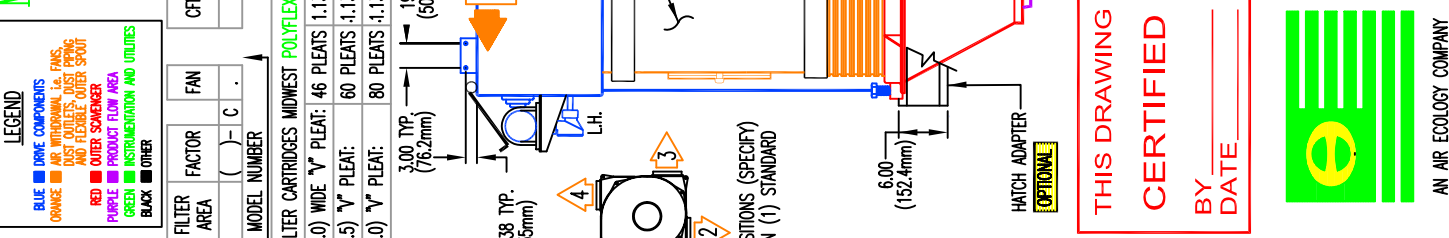
Operational Headquarters
 Midwest Plaza, 105 Slaver Rd.
 Charlevoix, Michigan 49720
 Phone (231) 547-4000
 Fax (231) 547-9453
 a division of
 ron pair enterprises, inc.

REF. SERIAL NO. JOB NO. SHEET NO. DRAWING NO. MA36EVA

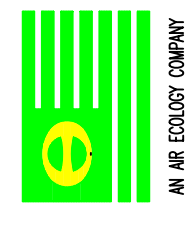
PREPARED FOR: P.O. NO. DATE: TITLE: MA36-EV PARAGON™ SERIES RETRACTABLE BULK LOADING SPOUT FOR ENCLOSED VEHICLES DRAWN: KC DATE: 07 FEB 00 CHECKED: RP/REM

This drawing and/or publication represents proprietary article and the designs, trade names or trademarks therein are either patented, have patents pending or are copyrighted internationally. Information appearing on this document remains the property of Ron Pair Enterprises, Inc. and is not to be reproduced without written authorization from an officer of this corporation.

REVISION	NO.	DATE:
A	03	MAY 00
B	08	MAY 01



THIS DRAWING CERTIFIED BY DATE



Automatic Level Sensing Kit Controller Shipped Loose for Remote Installation

LUBRICATION POINTS