

MA36 OV PARAGON™ SERIES VACUPAC™ I SYSTEM

DETAILS ARE SUBJECT TO CHANGE WITHOUT PRIOR NOTICE.
CAUTION: EXPLOSION PROOF CONSTRUCTION AVAILABLE.
 CONSULT FACTORY FOR DETAILS AND PRICING.
NOTE: ITEMS CHECKED WILL BE QUOTED BY MIDWEST

LEGEND

- BLUE: CORE COMPONENTS
- ORANGE: AIR INTAKE/EXHAUST FANS
- PINK: DUST OUTLETS, DUST PRONG AND FLEXIBLE OUTER SPOUT
- RED: OUTER SCRAWNER
- PURPLE: PRODUCT FLOW AREA
- GREEN: INSTRUMENTATION AND UTILITIES
- BLACK: OTHER

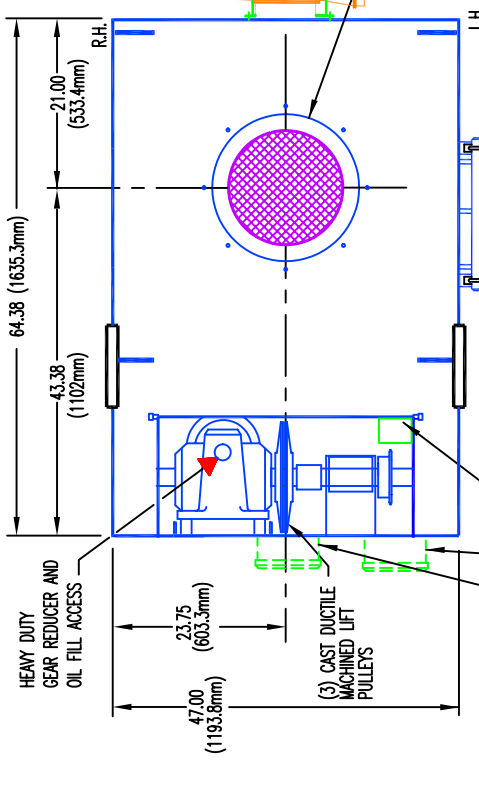
MODEL	HP	CFM
MPB75	.75	300
MPB10A	1.5	500
MPB12A	3.0	1000
MPB14A	5.0	1500
MPB15	7.5	1800
MPB15	7.5	2100
MPB15	7.5	2500

CFM	A	A/C RATIO
	IN	MM
		:1

MODEL	FAN	FACTOR	UNIT MODEL NUMBER
MA36 OV	() - C	() - C	

FILTER CARTRIDGES MIDWEST POLYFLEX™ V™ PLEAT 5.5" DIA.
 (1.0) WIDE V™ PLEAT: 46 PLEATS 1.13 IN DEEP .44 SPACING
 (1.5) V™ PLEAT: 60 PLEATS 1.13 IN DEEP .29 SPACING
 (2.0) V™ PLEAT: 80 PLEATS 1.13 IN DEEP .22 SPACING

CLEAN AIR EXHAUST FAN CAST MACHINED ALUMINUM ALLOY CONSTRUCTION WITH BALANCED IMPELLER
 (REFER TO FAN CHART FOR SIZES)
NOTE: REFER TO BACK OF THIS DRAWING FOR TECHNICAL DATA



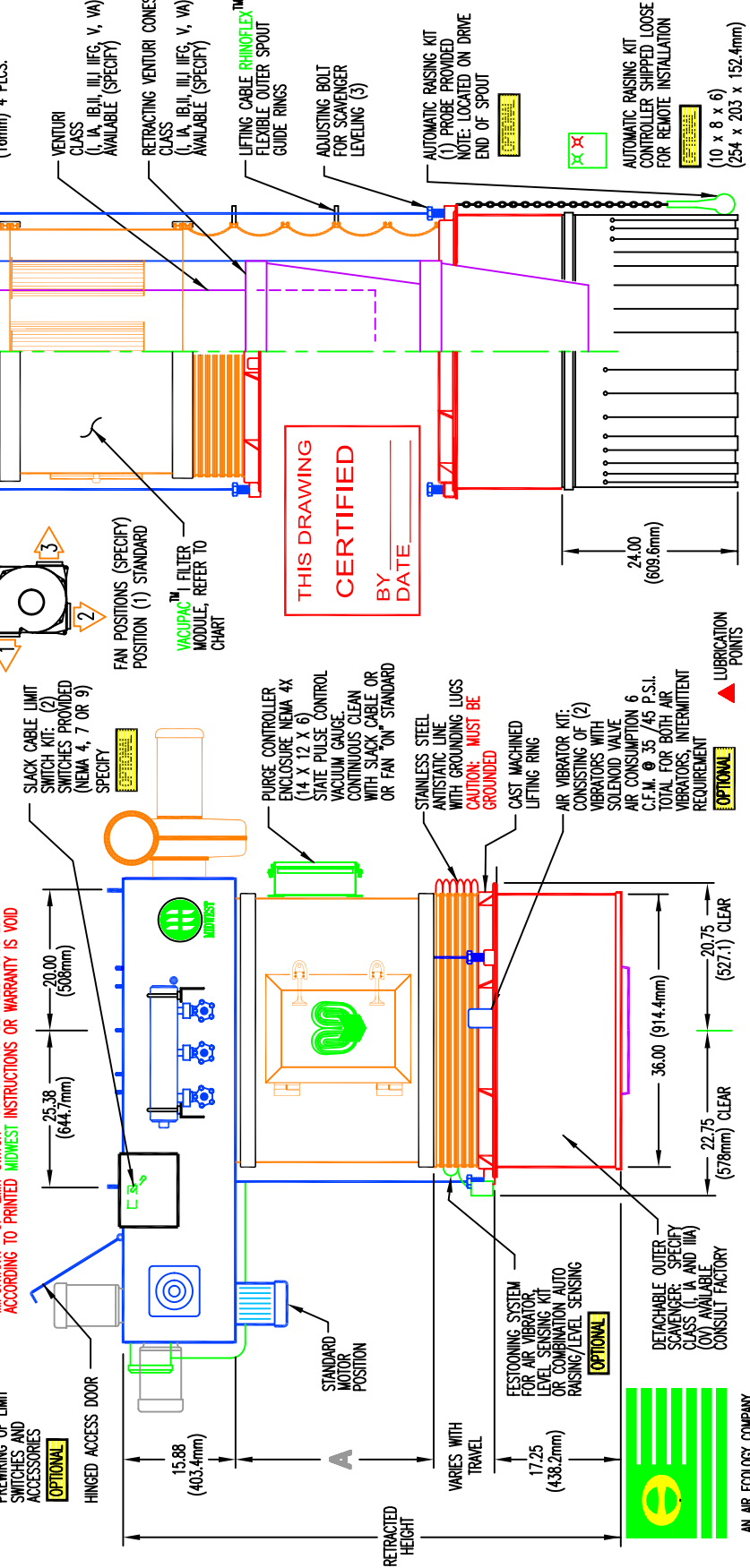
MA36 PRODUCT INLET:
 18" IN. DIA. (457.2mm)
 (8) .56 (14.2mm) X 1IN. (25.4mm) STUDS (ON A 20.00 IN. (508mm) B.C.)

COMPRESSED AIR PURGING SYSTEM 1" NPT INLET
 20 CFM AT STANDARD PULSE TIME SETTINGS
 80 TO 100 PSI REQUIRED

ROTATING LIMIT SWITCH FOR UPPER AND LOWER LIMITS, STANDARD NEMA 4, 2 POSITION SPDT XP AND 3RD INTERMEDIATE POSITION AVAILABLE

IMPORTANT: "UP" LIMIT SWITCH POSITION MUST BE FIELD ADJUSTED ACCORDING TO PRINTED INSTRUCTIONS OR WARRANTY IS VOID

JUNCTION BOX FOR PREWIRING OF LIMIT SWITCHES AND ACCESSORIES



SLACK CABLE LIMIT SWITCH KIT: (2) SWITCHES PROVIDED (NEMA 4, 7 OR 9) SPECIFY

PURGE CONTROLLER ENCLOSURE NEMA 4X STATE PULSE CONTROL VACUUM GAUGE CONTINUOUS CLEAN WITH SLACK CABLE OR OR FAN "ON" STANDARD

STAINLESS STEEL ANTISTATIC LINE WITH GROUNDING LUGS
CAUTION: MUST BE GROUNDED

AIR VIBRATOR KIT: CONSISTING OF (2) VIBRATORS WITH SOLENOID VALVE
 AIR CONSUMPTION 6 C.F.M. @ 35 /45 P.S.I. TOTAL FOR BOTH AIR VIBRATORS. INTERMITTENT REQUIREMENT

DETACHABLE OUTER SCRAWNER: SPECIFY CLASS (I, IA AND IIA) CONSULT FACTORY

THIS DRAWING CERTIFIED
 BY _____
 DATE _____

AUTOMATIC RAISING KIT (1) PROBE PROVIDED
NOTE: LOCATED ON DRIVE END OF SPOUT

AUTOMATIC RAISING KIT CONTROLLER SHIPPED LOOSE FOR REMOTE INSTALLATION
 (10 x 8 x 6)
 (254 x 203 x 152.4mm)

LUBRICATION POINTS



Operational Headquarters
 Midwest Plaza, 105 Stover Rd.
 Charlevoix, Michigan 49720
 Phone (231) 547-4000
 Fax (231) 547-9453
 a division of
 ron pair enterprises, inc.

REF. SHEET NO.
 JOB NO.
 SHEET NO.
 DRAWING NO. MA36OVA

PREPARED FOR: _____
 P.O. NO. _____ DATE: _____
 TITLE: MA36-OV PARAGON™ SERIES RETRACTABLE BULK LOADING SPOUT FOR ENCLOSED VEHICLES
 DRAWN: KC DATE: 07 FEB 00 CHECKED: RP/REM

This drawing and/or publication represents proprietary article and the designs, trade names or trademarks therein are either patented, have patents pending or are copyrighted internationally. Information appearing on this document remains the property of Ron Pair Enterprises, Inc. and is not to be reproduced without written authorization from an officer of this corporation.

REVISION	
NO.	DATE:
A-	03 MAY 00
B-	08 NOV 01

AN AIR ECOLOGY COMPANY