

# MIDWEST PARAGON™ SERIES VACULOADER® "HC" SERIES

**AIRFLO™** HOPPER FEED PRODUCT INLET  
CARTRIDGE TYPE, WIDE "V" PLEAT

DETAILS ARE SUBJECT TO CHANGE WITHOUT PRIOR NOTICE.  
**CAUTION: EXPLOSION PROOF CONSTRUCTION AVAILABLE  
CONSULT FACTORY FOR DETAILS AND PRICING**

STANDARD WIDE "V" PLEAT MEDIA CHART

MODEL	A	B	C	D	E	F	G	H	I	J	K	L	M
MVL37H/346C	37	38	30	15.5	15.75	19.88							
MVL37H/461C	37	12	38	15.5	15.75	19.88							
MVL37H/576C	37	24	38	15.5	15.75	19.88							
MVL43H/540C	43	44	33	18.5	18.75	22.88							
MVL43H/720C	43	12	44	18.5	18.75	22.88							
MVL43H/900C	43	24	44	18.5	18.75	22.88							
MVL54H/778C	54	55	36	24	24.25	28.38							
MVL54H/1037C	54	12	55	24	24.25	28.38							
MVL54H/1296C	54	24	55	24	24.25	28.38							

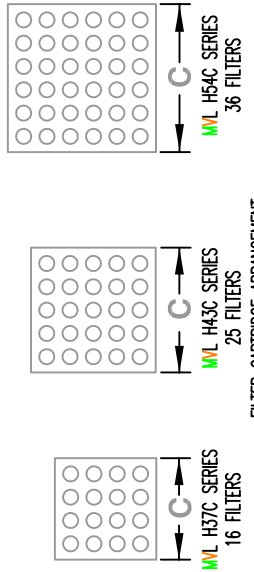
MODEL	FAN	FAN CAPACITY - A/C RATIO						
		800	1000	1250	1500	2000	2500	3000
MVL37H/346C	2.3	2.8	3.6					
MVL37H/461C	1.7	2.1	2.6	3.2				
MVL37H/576C	1.3	1.7	2.1	2.6	3.4			
MVL43H/540C	1.4	1.8	2.3	2.7	3.7			
MVL43H/720C	1.1	1.3	1.7	2.0	2.7	3.4		
MVL43H/900C	1.1	1.3	1.6	2.2	2.7	3.3		
MVL54H/778C	1.0	1.2	1.6	1.9	2.5	3.2	3.8	
MVL54H/1037C	1.0	1.2	1.5	1.9	2.3	2.8		
MVL54H/1296C	1.0	1.1	1.1	1.5	1.9	2.3		

**LEGEND**

- BLUE ■ DOME COMPONENTS
- ORANGE ■ AIR, INTERNAL L.A. FANS, DUST OUTLETS, JUST PIPING AND FLEXIBLE OUTER SPOUT
- RED ■ OUTER SPOUNDER
- PURPLE ■ PRODUCT FLOW AREA
- GREEN ■ INSTRUMENTATION AND UTILITIES
- BLACK ■ OTHER

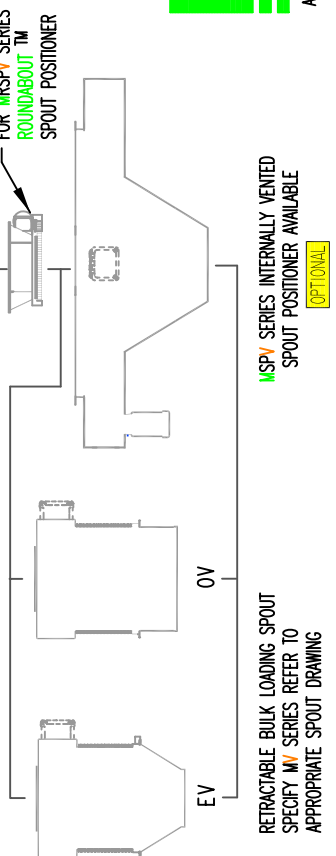
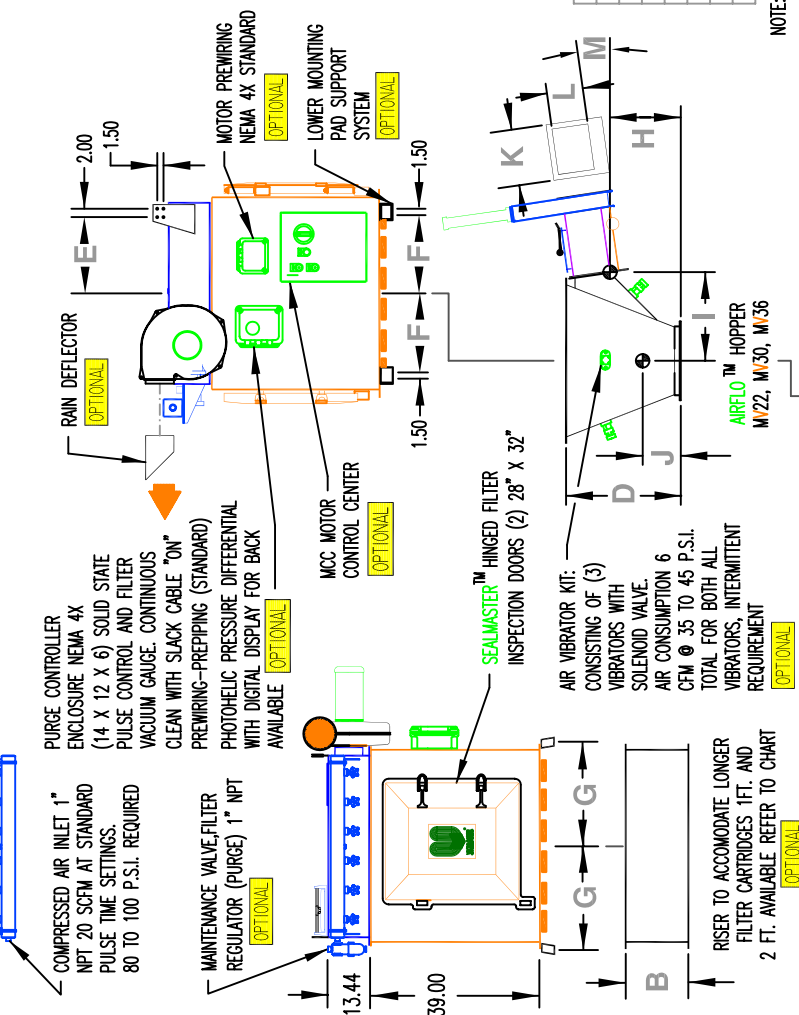
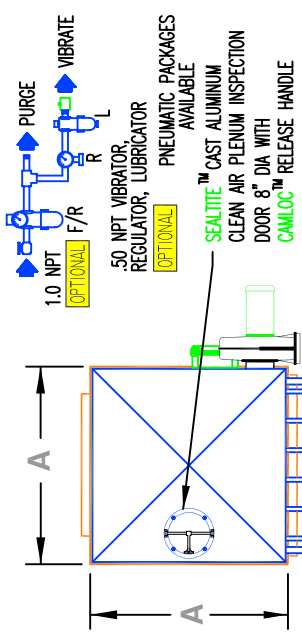
CLEAN AIR FANS AVAILABLE 5 IN SPWG		CARTRIDGE SPECIFICATIONS (5.5 DIA.)	
SCFM	M3/HR	NUMBER PLEATS	DEPTH PER FT.
100	171	38	1.25
300	514	60	.625
500	857	80	7.2
600	1028		
800	1371		
1000	1714		
1250	2142		
1500	2571		

**THIS DRAWING  
CERTIFIED  
BY \_\_\_\_\_  
DATE \_\_\_\_\_**

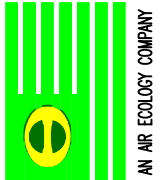


FILTER CARTRIDGE ARRANGEMENT

MATERIAL OF CONSTRUCTION	STANDARD	OPTIONAL CLASS
CLEAN AIR PLENUM	11 GA. A36	
FILTER HOUSING	11 GA. A36	
TUBE SHEET	.250 A36	
LOWER MOUNTING PADS	CAST ALUMINUM	
RISE	11 GA. A36	
HOPPER	11 GA. A36	
FLANGES	11 GA. A36	
FAN HOUSING	CAST ALUMINUM	
FAN IMPELLER	CAST ALUMINUM	
CALLOC™ T™ HANDLES	CAST ALUMINUM	
SEALMASTER™ FILTER DOORS	MOULDED POLYMER TO 176 F	
SEALMASTER™ INSPECTION PORT	CAST ALUMINUM	



NOTE: REFER TO PROPOSAL FOR FAN MODELS AND TO APPROPRIATE ELECTRICAL DRAWING FOR RPM AND VOLTAGE VARIATIONS. ALSO REFER TO TECHNICAL DATA, BACK OF THIS DRAWING FOR INCREASED FILTER MEDIA OPTIONS.



**MIDWEST International**  
Environmental Equipment for industry  
Operational Headquarters  
Midwest Plaza, 105 Stover Rd.  
Charlevoix, Michigan 49720  
Phone (231) 547-4000  
Fax (231) 547-9453  
a division of ron pair enterprises, inc.

REF. SERIAL NO. JOB NO. SHEET NO. DRAWING NO. SMHV001A  
PREPARED FOR: P.O. NO. DATE: DRAWN: KC DATE: 02 MAR 00 CHECKED: RP/REM  
TITLE: **VACULOADER® "HC" SERIES**

This drawing and/or publication represents proprietary article and the designs, trade names or trademarks therein are either patented, have patents pending or are copyrighted internationally. Information appearing on this document remains the property of Ron Pair Enterprises, Inc. and is not to be reproduced without written authorization from an officer of this corporation.

REVISION	
NO.	DATE:
17	MAR 01