

MIDWEST PARAGON™ SERIES VACULOADER® "TC" SERIES

TOP INLET FEED

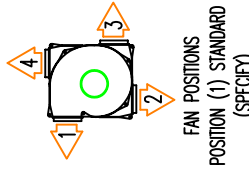
CARTRIDGE TYPE WIDE "V" PLEAT

PLEATED CARTRIDGE FILTER MFC SERIES (TOP FEED)
DETAILS ARE SUBJECT TO CHANGE WITHOUT PRIOR NOTICE.
**CAUTION: EXPLOSION PROOF CONSTRUCTION AVAILABLE.
CONSULT FACTORY FOR DETAILS AND PRICING**

STANDARD WIDE "V" PLEAT MEDIA CHART

MODEL	FAN A	FAN B	FAN C	FAN D	FAN E	FAN F	FAN G
MWL371/259C	37	38.50	12	15.63	15.75	19.88	
MWL371/348C	37	38.50	12	15.63	15.75	19.88	
MWL371/432C	37	38.50	12	15.63	15.75	19.88	
MWL431/432C	43	44.50	18	18.63	18.75	22.88	
MWL431/576C	43	44.50	18	18.63	18.75	22.88	
MWL431/720C	43	44.50	18	18.63	18.75	22.88	
MWL541/691C	54	55.50	24	24.13	24.25	28.38	
MWL541/922C	54	55.50	24	24.13	24.25	28.38	
MWL541/1152C	54	55.50	24	24.13	24.25	28.38	

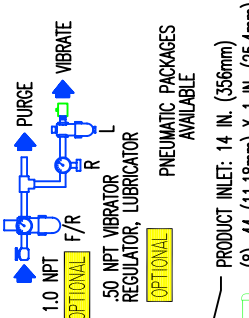
MODEL	FAN	FAN CAPACITY - A/C RATIO
MWL371/259C	800	1000 1250 1500 2000 2500 3000
MWL371/348C	3.0	3.8
MWL371/432C	2.2	2.8 3.5
MWL431/432C	1.8	2.3 2.8 3.4
MWL431/576C	1.3	1.7 2.1 2.6 3.4
MWL431/720C	1.1	1.3 1.7 2.0 2.7 3.4
MWL541/691C	1.1	1.4 1.8 2.1 2.8 3.6
MWL541/922C	1.0	1.3 1.6 2.1 2.6 3.2
MWL541/1152C	1.0	1.3 1.7 2.1 2.6



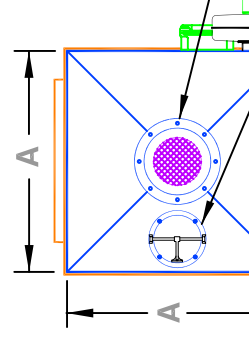
THIS DRAWING IS CERTIFIED
BY _____
DATE _____

SCFM	IM3/HR	SCFM	IM3/HR
100	171	1800	3085
300	514	2100	3600
500	857	2500	4285
600	1028	3000	4285
800	1371	3500	6000
1000	1714	4000	6857
1250	2142	4500	7714
1500	2571	5000	8571

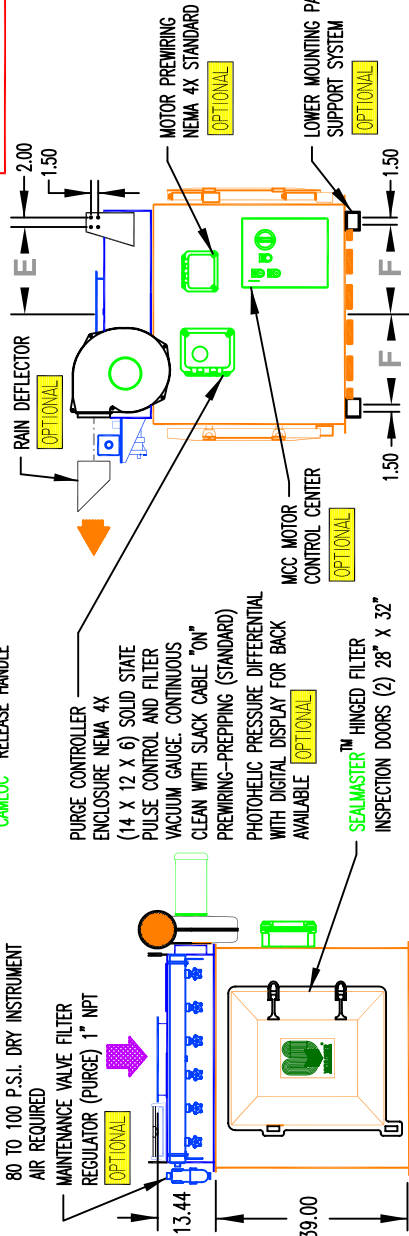
NOTE: REFER TO PROPOSAL FOR FAN MODELS AND TO APPROPRIATE ELECTRICAL DRAWING FOR RPM AND VOLTAGE VARIATIONS. ALSO REFER TO TECHNICAL DATA, BACK OF THIS DRAWING FOR INCREASED FILTER MEDIA OPTIONS.



PRODUCT INLET: 14 IN. (356mm) (8) .44 (11.18mm) X 1 IN. (25.4mm) BOLTS ON A 16 IN. (406.4mm) B.C.
SEALMASTER™ CAST ALUMINUM CLEAN AIR PLENUM INSPECTION DOOR 8" DIA WITH CWALOC™ RELEASE HANDLE

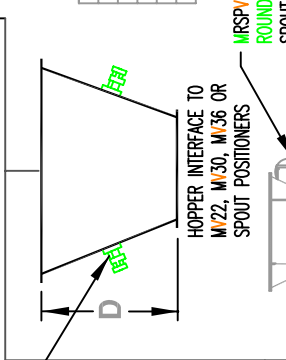


MAINTENANCE VALVE FILTER REGULATOR (PURGE) 1" NPT
COMPRESSED AIR INLET 1" NPT 20 SCFM AT STANDARD PULSE TIME SETTINGS. 80 TO 100 P.S.I. DRY INSTRUMENT AIR REQUIRED

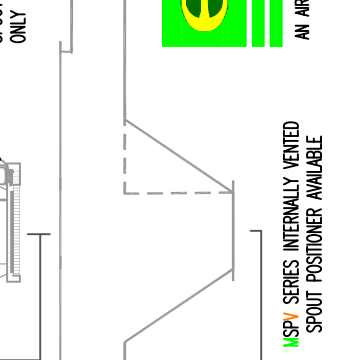
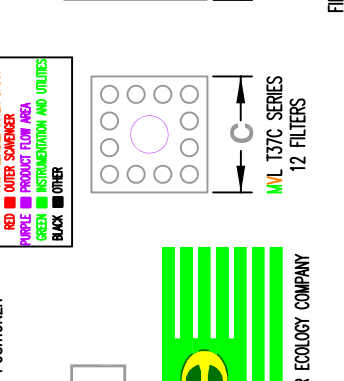
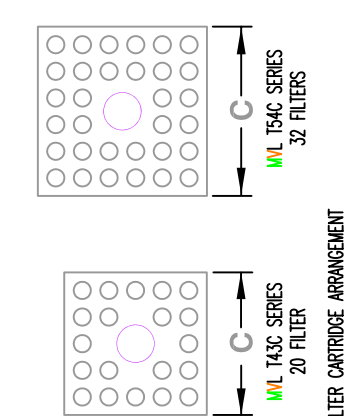


PURGE CONTROLLER ENCLASURE NEMA 4X (14 X 12 X 6) SOLID STATE PULSE CONTROL AND FILTER VACUUM GAUGE. CONTINUOUS CLEAN WITH SLACK CABLE "ON" PREMIXING-PREPPING (STANDARD) PHOTOHELIC PRESSURE DIFFERENTIAL WITH DIGITAL DISPLAY FOR BACK AVAILABLE
MOTOR PREWIRING NEMA 4X STANDARD
LOWER MOUNTING PAD SUPPORT SYSTEM
MCC MOTOR CONTROL CENTER
AIR VIBRATOR KIT: CONSISTING OF (2) VIBRATORS WITH SOLENOID VALVE. AIR CONSUMPTION 6 CFM @ 35 TO 45 P.S.I. TOTAL FOR BOTH AIR VIBRATORS, INTERMITTENT REQUIREMENT
HOPPER INTERFACE TO M22, M30, M36 OR SPOUT POSITIONERS
INSPECTION DOORS (2) 28" X 32"

FILTER MEDIA AVAILABLE	CARTRIDGE SPECIFICATIONS (5.5 DIA.)	MATERIAL OF CONSTRUCTION	STANDARD	OPTIONAL
POLYLEX™ SPUNBOND	NUMBER PLEATS 38	CLEAN AIR PLENUM	11 GA. A36	
NOMEX	DEPTH 1.25	FILTER HOUSING	250 A36	
CORTEX	WIDTH .625	LOWER MOUNTING PADS	CAST ALUMINUM	
(1.5) OPTIONAL MEDIA		RISE	11 GA. A36	
(2.0) OPTIONAL MEDIA		HOPPER FLANGES	11 GA. A36	
		FAN HOUSING	CAST ALUMINUM	
		FAN IMPELLER	CAST ALUMINUM	
		CWALOC™ T-HANDLES	CAST ALUMINUM	
		SEALMASTER™ FILTER DOORS	MOLDED POLYMER TO 176 F	
		SEALMASTER™ INSPECTION PORT	CAST ALUMINUM	



RETRACTABLE BULK LOADING SPOUT SPECIFY MV SERIES REFER TO APPROPRIATE SPOUT DRAWING



MSPI SERIES INTERNALLY VENTED SPOUT POSITIONER AVAILABLE

MIDWEST International
Operational Headquarters
Midwest Plaza, 105 Stover Rd.
Charlevoix, Michigan 49720
Phone (231) 547-4000
Fax (231) 547-9453
a division of
ron pair enterprises, inc.

REF. SERIAL NO. JOB NO. SHEET NO. DRAWING NO. STCV001A
PREPARED FOR: P.O. NO. TITLE: VACULOADER® "TC" SERIES
DATE: 02 MAR 00
DRAWN: KC CHECKED: RP/REM

This drawing and/or publication represents proprietary article and the designs, trade names or trademarks therein are either patented, have patents pending or are copyrighted internationally. Information appearing on this document remains the property of Ron Pair Enterprises, Inc. and is not to be reproduced without written authorization from an officer of this corporation.

REVISION	NO.	DATE:
	19	JULY 00
	26	MAR 01
	27	MAR 01