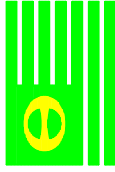
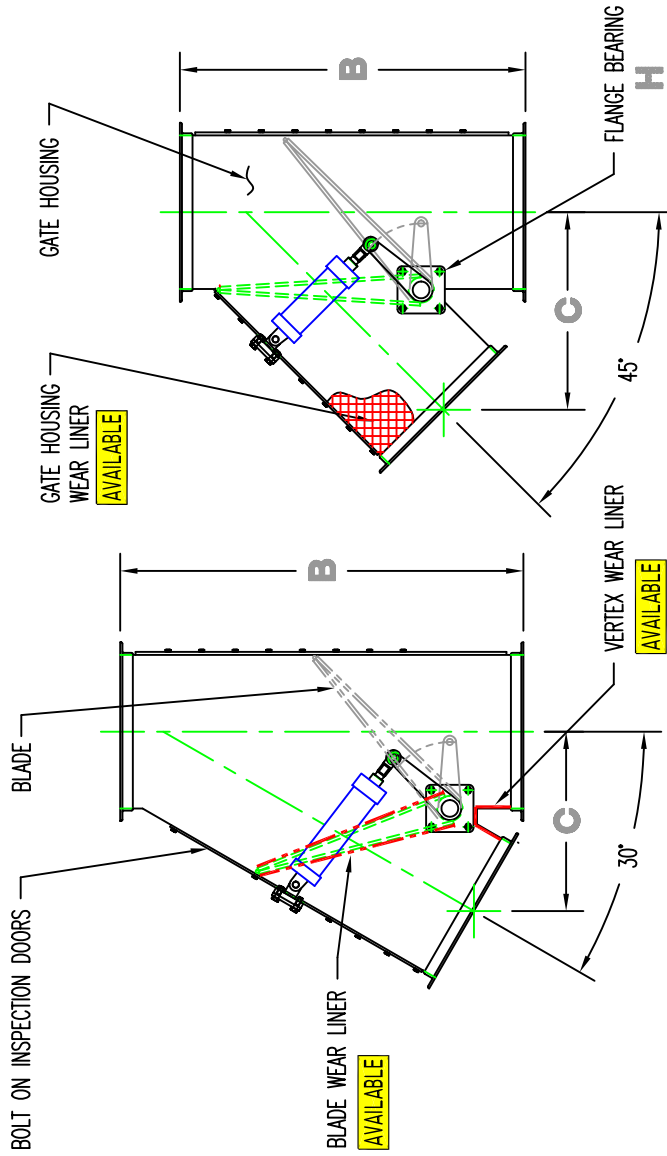
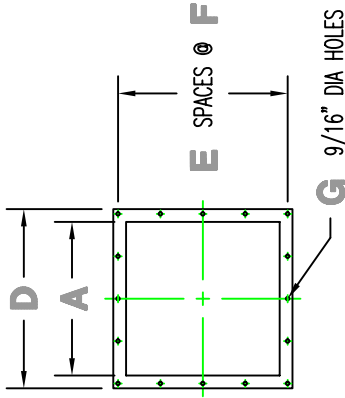


MDG PARAGON™ SERIES 30° AND 45° DIVERTER GATE

DETAILS ARE SUBJECT TO CHANGE WITHOUT PRIOR NOTICE.



AN AIR ECOLOGY COMPANY



CONSTRUCTION					
HOUSING		INSPECTION DOOR		BLADE	
THICKNESS	MATERIAL	THICKNESS	MATERIAL	THICKNESS	MATERIAL
10 GA	250 BHN	10 GA	250 BHN	0.13"	250 BHN
7 GA	400 BHN	7 GA	400 BHN	0.19"	400 BHN
0.25"	CARBIDE	0.25"	CARBIDE	0.25"	CARBIDE
0.38"	SPECIAL	0.38"	SPECIAL	0.38"	SPECIAL
					FLANGES THICKNESS
					0.25"
					0.38"
					0.50"

ACTUATION	
ACTUATOR	ACTUATOR ARM THICKNESS
PNEUMATIC	0.25"
HYDRAULIC	0.38"
ELECTRIC	0.50"
OTHER	

WEAR LINERS		
LOCATION	ATTACHMENT	THICKNESS MATERIAL
HOUSING	BOLT ON	0.25" 400 BHN
VERTEX	WELD ON	0.38" CARBIDE
BLADE		0.50" SPECIAL

45° MIDWEST MODEL	A		B		C		D		E		F		G		H	
	NOMINAL PRODUCT INLET	IN	MM	IN	MM	IN	MM	IN	MM	IN	MM	IN	MM	HOLES	FLANGE BEARING DIA	
MDG300	12	308.4	27	686	15	381	20	508	4	3.63	92	16	1.5	16	1.5	
MDG400	18	457	35	889	21.75	552.4	26	660	4	5.13	130	16	2.0	16	2.0	
MDG600	24	609.6	54	1372	30.87	784	32	813	4	6.63	168.4	16	2.0	16	2.0	
MDG900	36	914.4	77	1956	45.88	1165	44	1118	7	5.50	139.7	28	3.0	28	3.0	
MDG1200	48	1219	103	2616	63	1600	56	1422	9	6.31	160	32	3.0	32	3.0	

30° MIDWEST MODEL	A		B		C		D		E		F		G		H	
	NOMINAL PRODUCT INLET	IN	MM	IN	MM	IN	MM	IN	MM	IN	MM	IN	MM	HOLES	FLANGE BEARING DIA	
MDG300	12	308.4	30	762	16.5	419	16	508	4	3.63	92	16	1.5	16	1.5	
MDG400	18	457	47	1194	21.75	552	22	660	4	5.13	130	16	2.0	16	2.0	
MDG600	24	609.6	63	1600	28	711	28	813	4	6.63	168.4	16	2.0	16	2.0	
MDG900	36	914.4	90	2286	41.63	1057	40	1118	7	5.50	139.7	28	3.0	28	3.0	
MDG1200	48	1219	128	3251	58	1473	52	1422	9	6.31	160	32	3.0	32	3.0	



Operational Headquarters
Midwest Plaza, 105 Stover Rd.
Charlevoix, Michigan 49720
Phone (231) 547-4000
Fax (231) 547-9453
a division of
ron pair enterprises, inc.

REF.
SERIAL NO.
JOB NO.
SHEET NO.
DRAWING NO. MDG00001

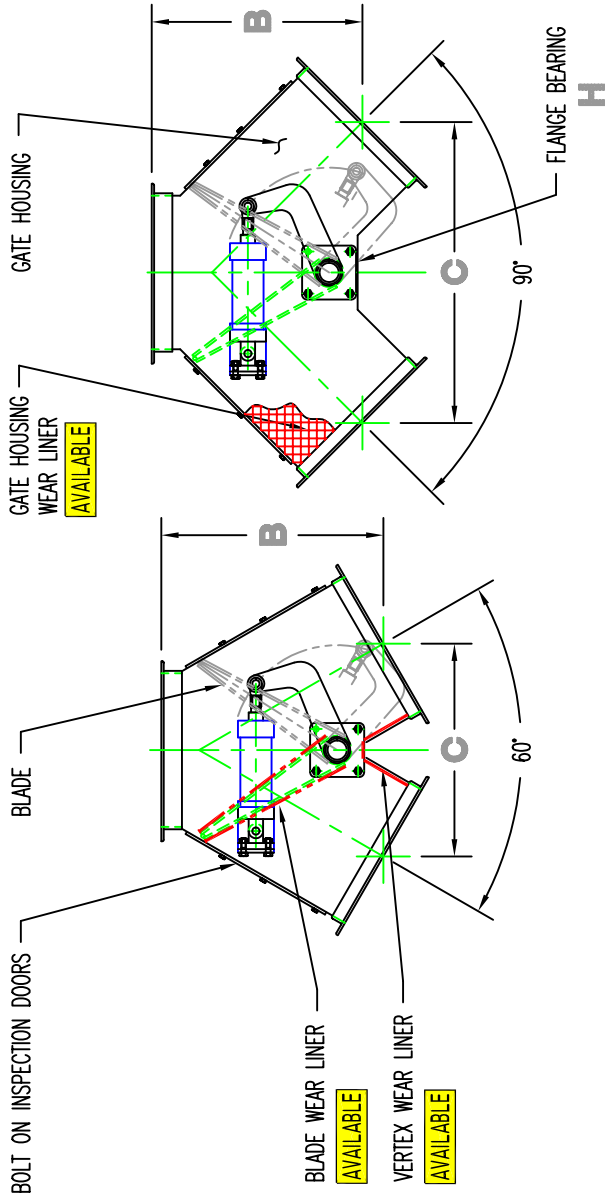
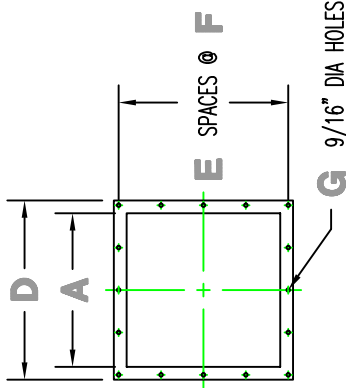
PREPARED FOR:
P.O. NO.
DATE:
TITLE: MDG DIVERTER GATE
DRAWN: KC DATE: 28 JAN 13
CHECKED: RP/REM

This drawing and/or publication represents proprietary article and the designs, trade names or trademarks therein are either patented, have patents pending or are copyrighted internationally. Information appearing on this document remains the property of Ron Pair Enterprises, Inc. and is not to be reproduced without written authorization from an officer of this corporation.

REVISION	
NO.	DATE:

MDG PARAGON™ SERIES 60° AND 90° DIVERTER GATE

DETAILS ARE SUBJECT TO CHANGE WITHOUT PRIOR NOTICE.



CONSTRUCTION							
HOUSING		INSPECTION DOOR		BLADE		FLANGES	
THICKNESS	MATERIAL	THICKNESS	MATERIAL	THICKNESS	MATERIAL	THICKNESS	THICKNESS
10 GA	250 BHN	10 GA	250 BHN	0.13"	250 BHN	0.25"	0.25"
7 GA	400 BHN	7 GA	400 BHN	0.19"	400 BHN	0.38"	0.38"
0.25"	CARBIDE	0.25"	CARBIDE	0.25"	CARBIDE	0.50"	0.50"
0.38"	SPECIAL	0.38"	SPECIAL	0.38"	SPECIAL		

ACTUATION		
ACTUATOR	No. OF ACTUATORS	ACTUATOR ARM THICKNESS
PNEUMATIC	1	0.25"
HYDRAULIC	2	0.38"
ELECTRIC		0.50"
OTHER		

WEAR LINERS		
LOCATION	ATTACHMENT	THICKNESS
HOUSING	BOLT ON	0.25"
VERTEX	WELD ON	0.38"
BLADE		0.50"

90° MIDWEST MODEL	NOMINAL PRODUCT INLET		SPACES		HOLES		FLANGE BEARING DIA							
	IN	MM	IN	MM	IN	MM	IN	MM						
MDG300	12	308.4	14.25	362	20	508	4	3.63	92	16	1.5	IN		
MDG400	18	457	35	27.75	26	660	4	5.13	130	16	2.0	IN		
MDG600	24	609.6	26	889	47	1194	32	813	4	6.63	168.4	16	2.0	IN
MDG900	36	914.4	53	1346	71	1803	44	1118	7	5.50	139.7	28	3.0	IN
MDG1200	48	1219	70	1778	81	2057	56	1422	9	6.31	160	32	3.0	IN

60° MIDWEST MODEL	NOMINAL PRODUCT INLET		SPACES		HOLES		FLANGE BEARING DIA							
	IN	MM	IN	MM	IN	MM	IN	MM						
MDG300	12	308.4	17	431.8	15.5	393.7	20	508	4	3.63	92	16	1.5	IN
MDG400	18	457	29	736.6	27	686	26	660	4	5.13	130	16	2.0	IN
MDG600	24	609.6	42	1067	33.25	844.5	32	813	4	6.63	168.4	16	2.0	IN
MDG900	36	914.4	61	1549	59	149.6	44	1118	7	5.50	139.7	28	3.0	IN
MDG1200	48	1219	81	2057	79.5	2019	56	1422	9	6.31	160	32	3.0	IN



Operational Headquarters
Midwest Plaza, 105 Stover Rd.
Charlevoix, Michigan 49720
Phone (231) 547-4000
Fax (231) 547-9453
a division of
ron pair enterprises, inc.

REF.
SERIAL NO.
JOB NO.
SHEET NO.
DRAWING NO. MDG00002

PREPARED FOR:
P.O. NO.
DATE:
TITLE: MDG DIVERTER GATE
DRAWN: KC DATE: 28 JAN 13
CHECKED: RP/REM

This drawing and/or publication represents proprietary article and the designs, trade names or trademarks therein are either patented, have patents pending or are copyrighted internationally. Information appearing on this document remains the property of Ron Pair Enterprises, Inc. and is not to be reproduced without written authorization from an officer of this corporation.

REVISION
NO. DATE: