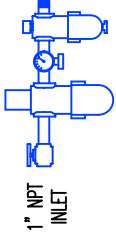


MIDWEST PARAGON™ SERIES
DOUBLE OPPOSED
SLIDING KNIFE GATE VALVE
MAOG 350-2

FOR FINE LOW AERATED PRODUCTS
 APPROX. WEIGHT: 400 LBS.

PNEUMATIC, ELECTRIC OR HYDRAULIC ACTUATED
 DETAILS ARE SUBJECT TO CHANGE WITHOUT PRIOR NOTICE.
CAUTION: EXPLOSION PROOF CONSTRUCTION AVAILABLE
CONSULT FACTORY FOR DETAILS AND PRICING



1" NPT
 INLET

FILTER, REGULATOR
 LUBRICATOR

OPTIONAL

PREWIRING/PREPPING

OPTIONAL

NOT SHOWN FOR CLARITY

PNEUMATIC SOLENOID VALVE
 DUST/WATER TIGHT

120 VAC, 4 WAY, 2 POSITION

OPTIONAL

(8 X 6 X 4 IN) DUST TIGHT
 ENCLOSURE WITH (2)
 INDICATING LIGHTS
 AND TERMINAL STRIPS

REED PROXIMITY SWITCHES FOR
 INDICATION OF GATE POSITION

OPTIONAL

A

B

B

13.25

40.25

(4) SPACES @

4.375 = 17.50

SQ. BOLT PATTERN

19.19

13.25

(2) PNEUMATIC CYLINDERS
 PROVIDED, STANDARD
 4.25 BORE, 1.00 DIA. ROD

POLYETHYLENE SEALS
 1 PIECE 40 DUROMETER
 .50 THICK STANDARD

SQ. OPENING
 NOMINAL

15.00

40.25

13.25

18.25

18.25

4.00 (102 mm)

7.25 LB

ELECTRIC ACTUATORS AVAILABLE
OPTIONAL

DUST SEALED ENCLOSURE
 FOR FINES, GRANULES AND DUST

SECTION "A-A"

SECTION "B-B"

INLET LINER
 .125 400 BHN

.50 BLADE
 THICKNESS

BLADE CONTACT DETAIL
 304 STAINLESS STEEL

9.13

.50
 (12.7 mm)

PROXIMITY LIMIT SWITCH DETAIL
 SECTION "C-C"

PROXIMITY LIMIT SWITCHES
 CONSULT FACTORY FOR
 AUTOMATION
OPTIONAL

BLADE WIPER

ACCESS AND SAFETY COVERS (2)

18.25

18.25

4.00 (102 mm)

7.25 LB

ELECTRIC ACTUATORS AVAILABLE
OPTIONAL

DUST SEALED ENCLOSURE
 FOR FINES, GRANULES AND DUST

SECTION "A-A"

SECTION "B-B"

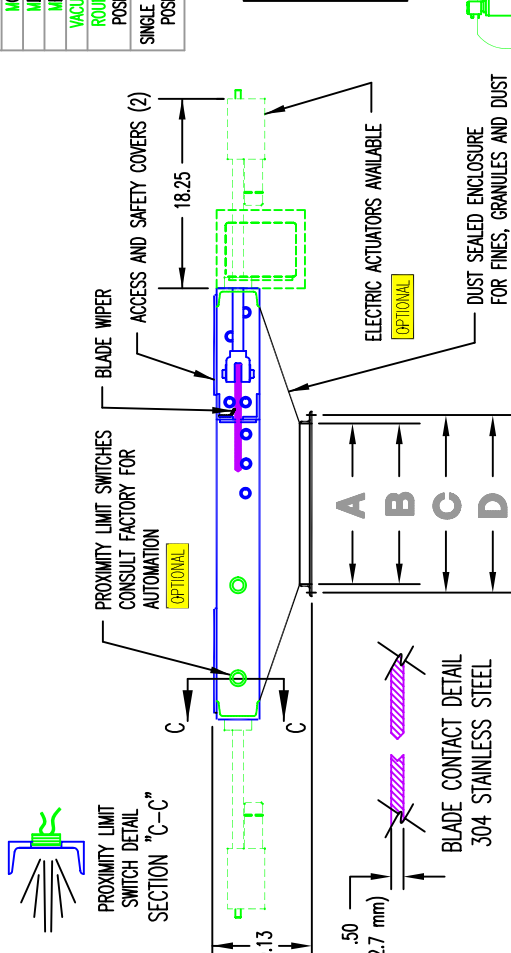
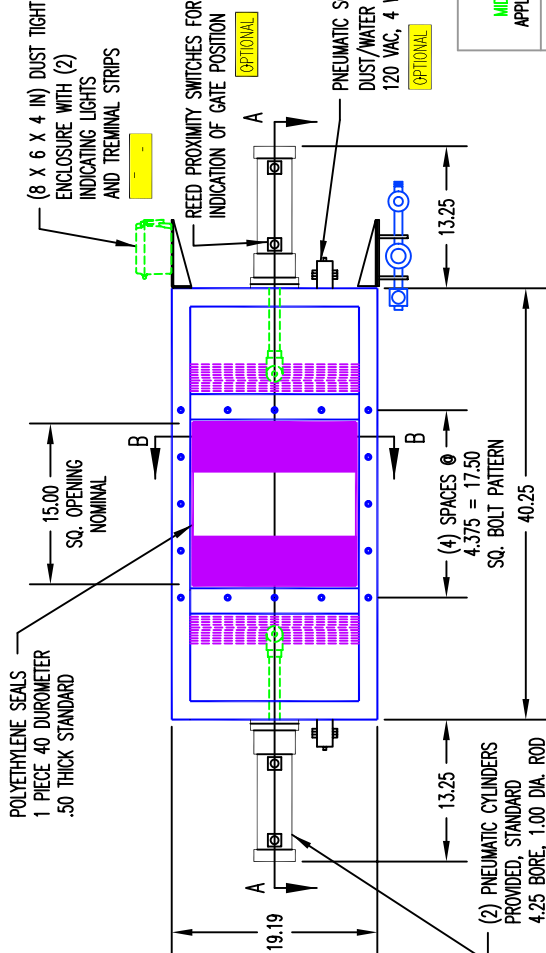
INLET LINER
 .125 400 BHN

.50 BLADE
 THICKNESS

9.13

.50
 (12.7 mm)

PROXIMITY LIMIT SWITCH DETAIL
 SECTION "C-C"



MIDWEST APPLICATION	A ROUND OUTLET		B SQUARE OUTLET		C ROUND BOLT PATTERN				D SQUARE BOLT PATTERN							
	IN.	MM	IN.	MM	HOLE SIZE	B.C.	NUMBER	SPACE	TOTAL	HOLE SIZE	IN.	MM	IN.	MM		
MC 22	14.00	355.6	.44	11	.44	11	406	11	8	.44	11	406	11	8		
MD 30	15.00	381	.44	11	.44	11	432	11	8	.44	11	508	11	8		
ME 36	18.00	457	.44	11	.44	11	508	11	8	.44	11	508	11	8		
VACULOADER™	14.00	355.6	.44	11	.44	11	406	11	8	.44	11	406	11	8		
ROUNDABOUT™ POSITIONER	14.00	355.6	.44	11	.44	11	457	11	8	.44	11	457	11	8		
SINGLE DIRECTION POSITIONER	18 X 18	457 X 457								4	5.13	130	20.50	520.7	44	11

LEGEND

- BLUE: IRON COMPONENTS
- ORANGE: CAST IRON
- RED: OTHER SPONGER
- GREEN: INSTRUMENTATION AND UTILITIES
- BLACK: OTHER
- PINK: PLASTIC
- PURPLE: PRODUCT FLOW AREA
- YELLOW: FLEXIBLE OVER SPOUT
- MAGENTA: FANS
- TEAL: FAST UNLOADERS
- BROWN: JUST PIPING



FAILSAFE™ ACCUMULATOR
 AND VALVE SYSTEM FOR
 PNEUMATIC GATE SYSTEMS

**THIS DRAWING
 CERTIFIED**
 BY _____
 DATE _____

- NOTES:
1. PNEUMATIC ACTUATED GATES; COMPRESSED AIR PRESSURE REQUIRED 80 PSI/5.5 BAR MINIMUM, CONSUMPTION MINIMAL
 2. GATE FRAME CONSTRUCTION
 4.00 [102] 7.25# FT
 STRUCTURAL A36 CARBON STEEL CHANNEL (STANDARD)
 MIDWEST EXCLUSIVE STAINLESS STEEL CAM ROLLER ECCENTRICS
 STANDARD TO KEEP STAINLESS STEEL BLADE PRESSED
 TIGHTLY AGAINST UNDERSIDE OF POLYETHYLENE SEAL
 NOTE: SEAL IS (1) PIECE .50" THICK (REPLACABLE)
 3. CLASS OF CONSTRUCTION AVAILABLE FOR GATE FRAMES, BLADES, LINERS AND DUST SEALED TRANSITION. (REFER TO CHART) (STANDARD GATE BLADE CONSTRUCTION CLASS III 304 SS, 316L AVAILABLE)
 4. GATE VALVE ASSEMBLY INCLUDES (16) GRADE 8 HIGH STRENGTH BOLTS, ZINCPLATED .50 NC X 1.50" LG. W/LOCK WASHERS, WEDGE WASHERS AND NUTS

- CLASS I: NOT APPLICABLE
 IA: CARBON MILD STEEL A36 CHANNEL FRAME (STANDARD)
 IB: CLASS IA FRAME AND 250 BHN (AR) BLADE
 IIC: 304 STAINLESS STEEL CHANNEL FRAME (316 SS AVAILABLE)
 IIIC: ALL 304 STAINLESS STEEL CONSTRUCTION (316 SS AVAILABLE)
 III: ALL S.S. FOOD GRADE CONSTRUCTION
 IV: HIGH TEMPERATURE (400F) NON METALLIC COMPONENTS
 IV: CLASS IA FRAME AND 400 BHN (AR) BLADE AVAILABLE
 PAINT: 3 MILS WHITE EPOXY STANDARD (OTHER PAINT SYSTEMS AVAILABLE)



Operational Headquarters
 Midwest Plaza, 105 Slaver Rd.
 Charlevoix, Michigan 49720
 Phone (231) 547-4000
 Fax (231) 547-9453
 a division of
 ron pair enterprises, inc.

REF. SERIAL NO.
 JOB NO.
 SHEET NO.
 DRAWING NO. 7003-A

PREPARED FOR:
 P.O. NO.
 DATE:
 TITLE: **MIDWEST PARAGON™ SERIES**
DOUBLE OPPOSED SLIDING KNIFEGATE
 DRAWN: KC DATE: 07 FEB 00 CHECKED: RP/REM

This drawing and/or publication represents proprietary article and the designs, trade names or trademarks therein are either patented, have patents pending or are copyrighted internationally. Information appearing on this document remains the property of Ron Pair Enterprises, Inc. and is not to be reproduced without written authorization from an officer of this corporation.

REVISION
 NO. DATE:

