

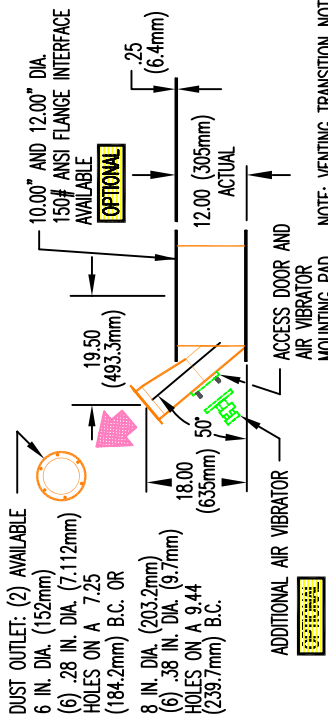
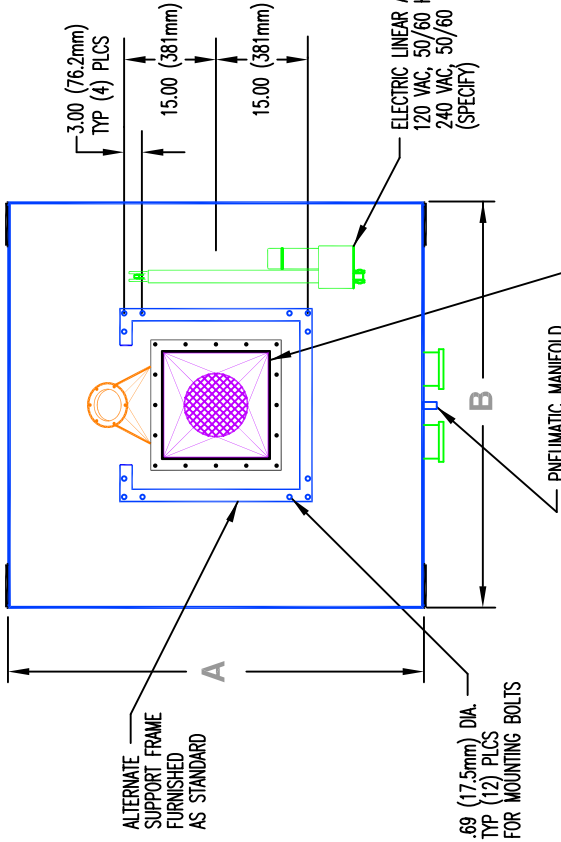
MIDWEST PARAGON™ SERIES FLATTOP™ SPOUT POSITIONER

INTERNALLY VENTED MULTIPLE DIRECTION FLAT TOP SPOUT POSITIONER
DETAILS ARE SUBJECT TO CHANGE WITHOUT PRIOR NOTICE.
**CAUTION: EXPLOSION PROOF CONSTRUCTION AVAILABLE
CONSULT FACTORY FOR DETAILS AND PRICING**

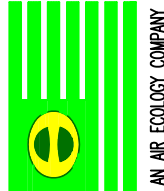
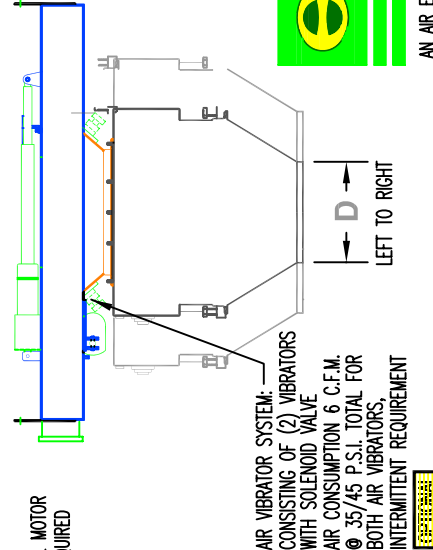
MIDWEST MODEL	A		B		C		D		E		F		G	
	IN	MM	IN	MM	IN	MM	IN	MM	IN	MM	IN	MM	IN	MM
MFPV/500-2	62.25	1581	60.13	1527.3	29.00	736.6	12.00	305	26.81	681	53.63	1362	12.00	305
MFPV/450-2	68.25	1734	66.13	1680	29.00	736.6	18.00	457	29.81	757.2	59.63	1514.6	18.00	457
MFPV/600-2	80.00	2032	78.44	1992.3	35.50	901.7	24.00	609.6	36.00	914.4	72.00	1828.8	24.00	609.6
MFPV/450/600-2	80.00	2032	78.44	1992.3	35.50	901.7	24.00	609.6	36.00	914.4	72.00	1828.8	24.00	609.6

(16) .44 (11mm) HOLES

ELECTRIC LINEAR ACTUATORS (2)
120 VAC, 50/60 Hz SINGLE PHASE OR
240 VAC, 50/60 Hz SINGLE PHASE
(SPECIFY)



NOTE: VENTING TRANSITION NOT REQUIRED WITH VACU-LOADER™ OR COMPAC-LOADER™



AN AIR ECOLOGY COMPANY

ACTUATOR PREWIRING ENCLOSURE WITH REVERSING CAPACITORS 110 V AND 220 V AVAILABLE.
SPECIFY NO ADDITIONAL MOTOR CONTROLS REQUIRED [OPTIONAL]

RETRACTED HEIGHT VARIES WITH SPOUT MODEL AND TRAVEL
3.50
1.50 TYP
(16) .56 DIA HOLES
MOTOR PREWIRE JUNCTION BOX JB 1 (PRIMARY POWER) NEMA 4X STANDARD (NEMA 7 & 9 (XP) AVAILABLE) [OPTIONAL]

PREWIRE JUNCTION BOX JB 2 (CONTROL VOLTAGE) NEMA 4X STANDARD (NEMA 7 & 9 (XP) AVAILABLE) [OPTIONAL]

RETRACTABLE BULK LOADING SPOUT CONSULT FACTORY FOR APPLICABLE MODEL
M/22, M/30, M/36 EV/OV (SPECIFY) (M/50-EV SHOWN)

MIDWEST International
Operational Headquarters
Midwest Plaza, 105 Stover Rd.
Charlevoix, Michigan 49720
Phone (231) 547-4000
Fax (231) 547-9453
a division of
ron pair enterprises, inc.

REF. SERIAL NO. JOB NO. SHEET NO. DRAWING NO. MFPV001A
PREPARED FOR: P.O. NO. DATE: DRAWN: KC DATE: 07 FEB 00 CHECKED: RP/REM
TITLE: MFPV SERIES MULTIPLE DIRECTION SPOUT POSITIONER

This drawing and/or publication represents proprietary article and the designs, trade names or trademarks therein are either patented, have patents pending or are copyrighted internationally. Information appearing on this document remains the property of Ron Pair Enterprises, Inc. and is not to be reproduced without written authorization from an officer of this corporation.

REVISION	
NO.	DATE:
A	17 AUG 00
B	25 SEPT 00
C	13 DEC 01