

MIDWEST ROUNDABOUT™ LOW PROFILE

ROTATING SHUTTLE POSITIONER

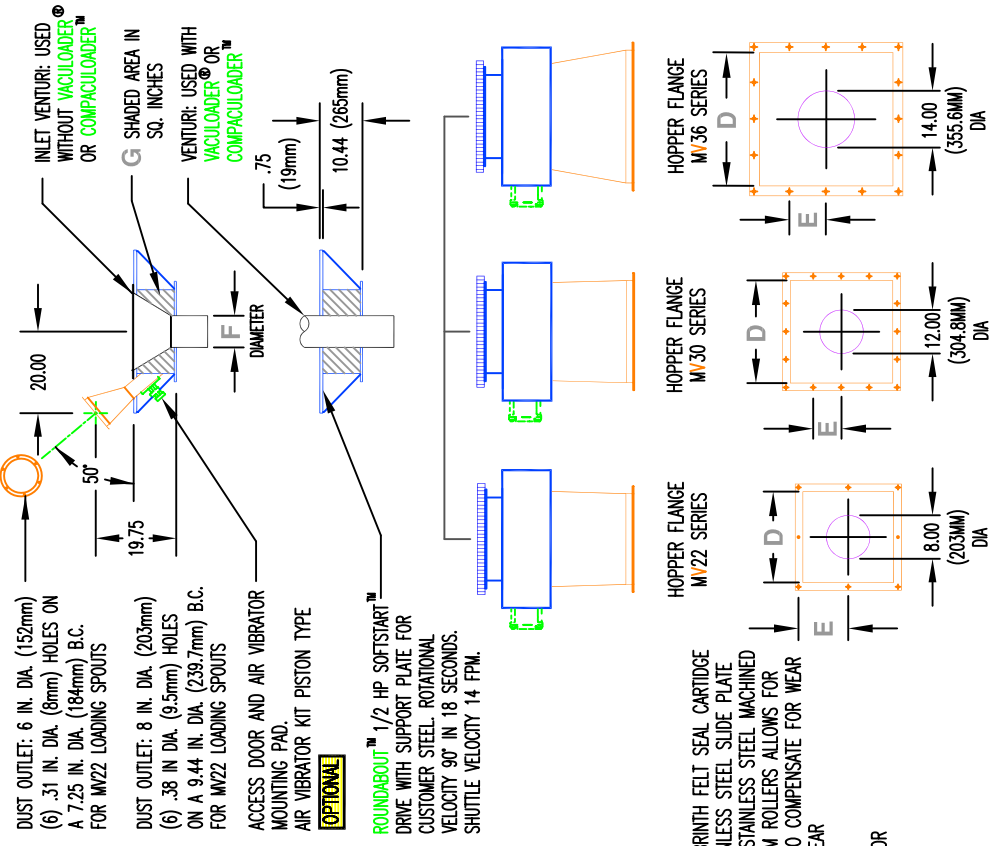
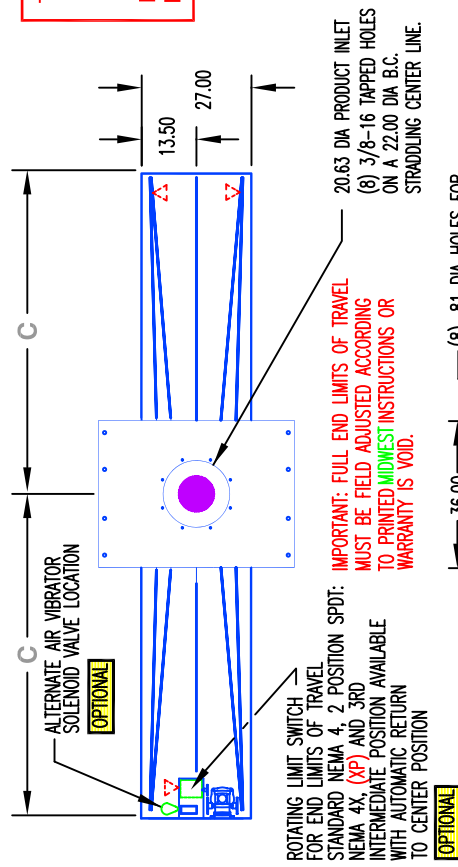
MODEL	600-2		900-2		1200-2		1800-2	
	ENGLISH	METRIC	ENGLISH	METRIC	ENGLISH	METRIC	ENGLISH	METRIC
A	4'-0"	1219.2	6'-0"	1829	8'-0"	2438.4	12'-0"	3658
B	3'-5"	1041.4	3'-7"	1092.2	3'-9"	1143	4'-1"	1244.6
C	3'-9"	1143	4'-9"	1447.8	5'-9"	1752.6	7'-9"	2362.2

SQUARE BOLT PATTERN	M/22		M/30		M/36	
	ENGLISH	METRIC	ENGLISH	METRIC	ENGLISH	METRIC
D	17.75	451	20.00	508	26.00	660.4
E	9.88	251	5.50	140	7.00	178
F	7.50	190.5	11.00	279.4	13.50	342.9
G	289	SQ. IN.	239	SQ. IN.	190	SQ. IN.

LEGEND

- BLUE ■ DRIVE COMPONENTS
- ORANGE ■ AIR MOTOR/VALVE
- PINK ■ AIR INLET/OUTLET
- GREEN ■ INSTRUMENTATION AND UTILITIES
- RED ■ OUTER SPOUNDER
- PURPLE ■ PRODUCT FLOW AREA
- BLACK ■ OTHER

THIS DRAWING
CERTIFIED
BY _____
DATE _____



Operational Headquarters
Midwest Plaza, 105 Stover Rd.
Charlevoix, Michigan 49720
Phone (231) 547-4000
Fax (231) 547-9453

REF. _____
SERIAL NO. _____
JOB NO. _____
SHEET NO. _____
DRAWING NO. MRSPLP-A

PREPARED FOR: _____
P.O. NO. _____
DATE: _____
TITLE: MIDWEST ROUNDABOUT MRSPV LOW PROFILE
ROTATING SHUTTLE POSITIONER
DRAWN: KC DATE: 07 FEB 00
CHECKED: RP/REM

This drawing and/or publication represents proprietary article and the designs, trade names or trademarks therein are either patented, have patents pending or are copyrighted internationally. Information appearing on this document remains the property of Ron Pair Enterprises, Inc. and is not to be reproduced without written authorization from an officer of this corporation.

REVISION	
NO.	DATE:
A	10 JUNE 02
B	12 JUNE 02