

MIDWEST PARAGON™ SERIES MANUAL LINEAR SLIDING KNIFE GATES

NON-RACK AND PINION DRIVE

NOTES: 1. CLASS OF CONSTRUCTION AVAILABLE FOR LINERS (IA, II, III AND V REFER TO CHART)

OPTIONAL

- GATE FRAME CONSTRUCTION
4.00 [102] 7.25# FT
6.00 [152] 10.5# FT
STRUCTURAL A36 CARBON STEEL CHANNEL (STANDARD)
- MIDWEST EXCLUSIVE STAINLESS STEEL CAM ROLLER ECCENTRICS STANDARD TO KEEP STAINLESS STEEL BLADE PRESSED TIGHTLY AGAINST UNDERSIDE OF POLYETHYLENE OR URETHANE SEAL
- CLASS OF CONSTRUCTION AVAILABLE FOR GATE FRAMES, BLADES LINERS AND DUST SEALED TRANSITION. (REFER TO CHART) (STANDARD GATE BLADE CONSTRUCTION CLASS III 304 SS, 316L AVAILABLE)
- CLASS OF CONSTRUCTION AVAILABLE FOR GATE FRAMES, BLADES LINERS AND DUST SEALED TRANSITION. (REFER TO CHART) (STANDARD GATE BLADE CONSTRUCTION CLASS III 304 SS, 316L AVAILABLE)

CLASS I: NOT APPLICABLE

II: CARBON MILD STEEL A36 CHANNEL FRAME, (STANDARD)

III: CLASS IA FRAME AND 250 BHN (AR) BLADE.

IIIa: 304 STAINLESS STEEL CHANNEL FRAME (316 SS AVAILABLE).

IIIb: ALL 304 STAINLESS STEEL CONSTRUCTION (316 SS AVAILABLE).

IV: HIGH TEMPERATURE (400F) NON METALLIC COMPONENTS.

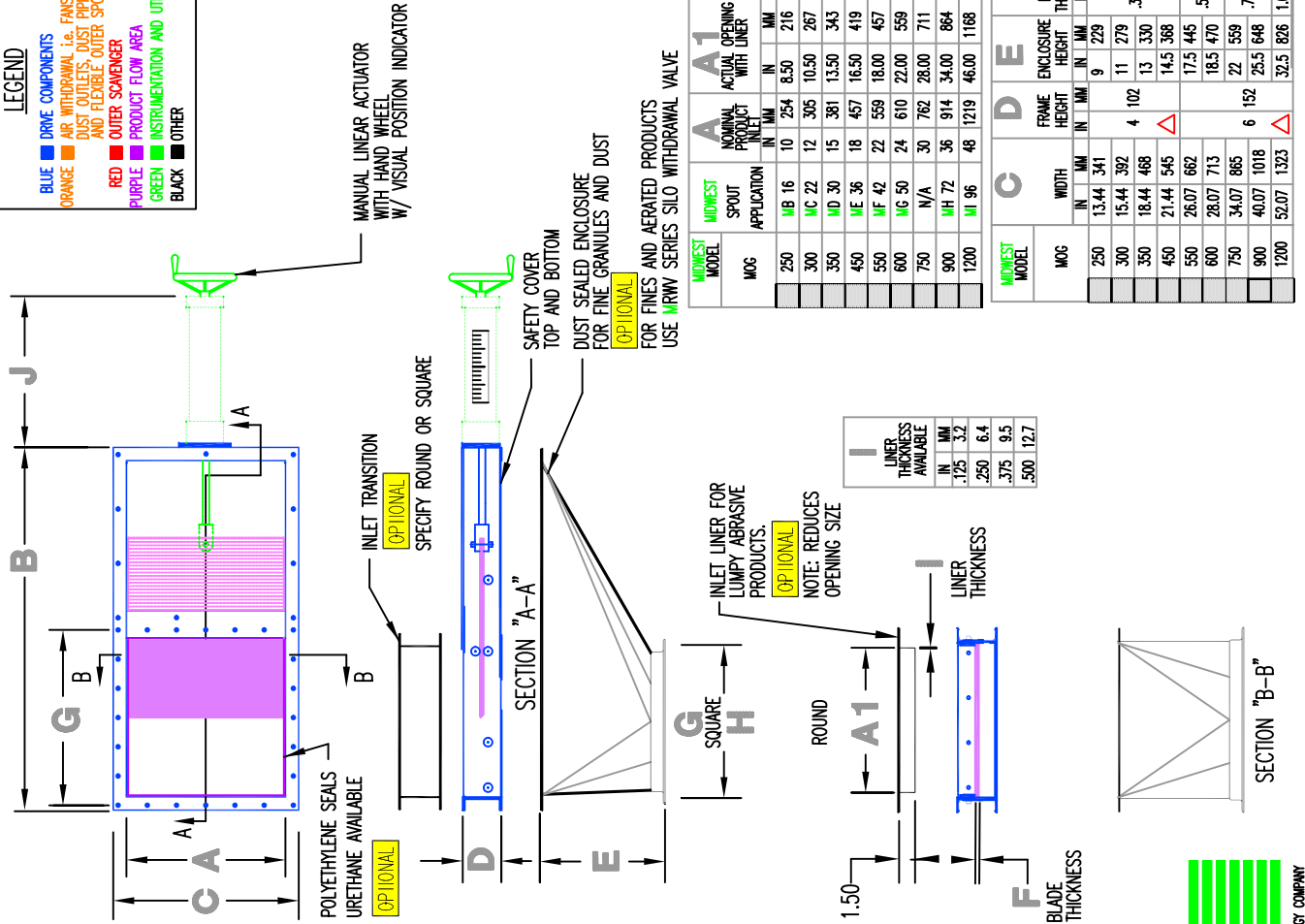
V: CLASS IA FRAME AND 400 BHN (AR) BLADE

VI: ROCK BOX 400 BHN INSTALLED IN (NSP) TRANSITION AVAILABLE, CONSULT FACTORY.

PAINT: 3 MILS WHITE EPOXY STANDARD (OTHER PAINT SYSTEMS AVAILABLE)

△ (LINERS ADD .125/3mm TO FRAME HEIGHT).

LEGEND	
BLUE	DRIVE COMPONENTS
ORANGE	AIR WITHDRAWAL, i.e. FANS, DUST OUTLETS, DUST PIPING AND FLEXIBLE OUTER SPOUT
RED	OUTER SCRAMBLER
PURPLE	PRODUCT FLOW AREA
GREEN	INSTRUMENTATION AND UTILITIES
BLACK	OTHER



MIDWEST MODEL	MOC	SPOUT APPLICATION	NOMINAL PRODUCT INLET		ACTUAL OPENING WITH LINER		LENGTH
			IN	MM	IN	MM	
250	WB 16	10	254	8.50	216	28.62	727
300	MC 22	12	305	10.50	267	31.76	807
350	WD 30	15	381	13.50	343	37.76	959
450	WE 36	18	457	16.50	419	43.76	1112
550	WF 42	22	559	18.00	457	51.76	1315
600	WG 50	24	610	22.00	559	55.91	1420
750	M/A	30	762	28.00	711	71.16	1807
900	WH 72	36	914	34.00	864	83.16	2112
1200	WI 96	48	1219	46.00	1168	107.16	2722

MIDWEST MODEL	MOC	WIDTH	FRAME HEIGHT	ENCLOSURE HEIGHT	BLADE THICKNESS	SQUARE BOLT PATTERN		ROUND BOLT PATTERN		ACTUATOR LENGTH										
						SPACE	TOTAL	HOLE SIZE	BOLE SIZE		HOLE SIZE	BOLE SIZE								
250	13.44	341	9	229	9.43	239	8	203	113	51	17.5	444								
300	15.44	392	4	102	11	279	.56	14	16.00	406	14	356	137	62	19.5	495				
350	18.44	468	4	102	13	330	5.03	128	20.12	511	8	17.00	431	15	381	159	71	22.5	571	
450	21.44	545	△	145	14.5	368	6.12	155	24.5	622	10	20.00	508	18	457	190	86	25.5	648	
550	26.07	662	△	17.5	17.5	445	4.42	112	26.5	673	12	24.50	622	22	559	331	150	29.5	749	
600	28.07	713	△	18.5	18.5	470	5.42	137	32.5	826	16	26.50	673	24	610	373	169	31.5	800	
750	34.07	865	△	22	22	559	6.42	163	36.5	978	24	32.50	826	30	762	547	248	37.5	953	
900	40.07	1018	△	32.5	32.5	826	6.31	180	50.5	1283	24	50.50	1283	48	1219	1261	572			
1200	52.07	1323	△	46.00	46.00	1168														

Operational Headquarters
Midwest Plaza, 105 Stover Rd.
Charlevoix, Michigan 49720
Phone (231) 547-4000
Fax (231) 547-9453
a division of ron pair enterprises, inc.

REF. SERIAL NO. JOB NO. SHEET NO. DRAWING NO. 7004-A

PREPARED FOR: P.O. NO. TITLE: SLIDING KNIFE GATES
DRAWN: KC DATE: 07 FEB 00

DATE: CHECKED: RP/REM

This drawing and/or publication represents proprietary article and the designs, trade names or trademarks therein are either patented, have patents pending or are copyrighted internationally. Information appearing on this document remains the property of Ron Pair Enterprises, Inc. and is not to be reproduced without written authorization from an officer of this corporation.

REVISION NO. DATE: A - 07 FEB 05

