

MIDWEST PARAGON™ SERIES SLIDING KNIFE GATES

PNEUMATIC, ELECTRIC AND HYDRAULIC OPERATED

DETAILS ARE SUBJECT TO CHANGE WITHOUT PRIOR NOTICE.

CAUTION: EXPLOSION PROOF CONSTRUCTION AVAILABLE.

CONSULT FACTORY FOR DETAILS AND PRICING.

NOTE: ITEMS CHECKED WILL BE QUOTED BY MIDWEST

- NOTES:
1. PNEUMATIC ACTUATED GATES, COMPRESSED AIR PRESSURE REQUIRED 80 PSI/5.5 BAR MINIMUM
 2. CLASS OF CONSTRUCTION AVAILABLE FOR LINERS (IA, II, III AND V REFER TO CHART)
 3. GATE FRAME CONSTRUCTION
 4.00 [102] 7.25# FT
 6.00 [152] 10.5# FT
 STRUCTURAL A36 CARBON STEEL CHANNEL (STANDARD)
 MIDWEST EXCLUSIVE STAINLESS STEEL CAM ROLLER ECCENTRICS STANDARD TO KEEP STAINLESS STEEL BLADE PRESSED TIGHTLY AGAINST UNDERSIDE OF POLYETHYLENE OR URETHANE SEAL
 4. CLASS OF CONSTRUCTION AVAILABLE FOR GATE FRAMES, BLADES, LINERS AND DUST SEALED TRANSITION. (REFER TO CHART) (STANDARD GATE BLADE CONSTRUCTION CLASS III 304 SS, 316L AVAILABLE)

OPTIONAL

OPTIONAL

OPTIONAL

OPTIONAL

OPTIONAL

OPTIONAL

OPTIONAL

OPTIONAL

OPTIONAL

OPTIONAL

OPTIONAL

OPTIONAL

OPTIONAL

OPTIONAL

OPTIONAL

OPTIONAL

OPTIONAL

OPTIONAL

OPTIONAL

OPTIONAL

OPTIONAL

OPTIONAL

OPTIONAL

OPTIONAL

OPTIONAL

OPTIONAL

OPTIONAL

OPTIONAL

OPTIONAL

OPTIONAL

OPTIONAL

OPTIONAL

OPTIONAL

OPTIONAL

OPTIONAL

OPTIONAL

OPTIONAL

OPTIONAL

OPTIONAL

OPTIONAL

OPTIONAL

OPTIONAL

OPTIONAL

OPTIONAL

OPTIONAL

OPTIONAL

OPTIONAL

OPTIONAL

OPTIONAL

OPTIONAL

OPTIONAL

OPTIONAL

OPTIONAL

OPTIONAL

(8 X 6 X 4 IN) 200 X 150 X 100mm
 DUST TIGHT ENCLOSURE WITH TERMINAL STRIPS

OPTIONAL

MODELS 750, 900 AND 1200
 (2) TWO PNEUMATIC OR HYDRAULIC ACTUATORS
 STANDARD (REFER TO CHART)

OPTIONAL

REED PROXIMITY
 LIMIT SWITCHES FOR
 INDICATION OF GATE
 POSITION FOR PNEUMATIC
 ACTUATION (2) SWITCHES

OPTIONAL

PNEUMATIC SOLENOID VALVE,
 NEMA 4
 DUST/WATER TIGHT
 220 VAC, 4 WAY, 2 POSITION

OPTIONAL

FAULSAFE™ ACCUMULATOR AND
 VALVE SYSTEM FOR
 PNEUMATIC AND HYDRAULIC
 GATE SYSTEMS

OPTIONAL

ACTUATION (PNEUMATIC)

OPTIONAL

OPTIONAL

OPTIONAL

OPTIONAL

OPTIONAL

OPTIONAL

OPTIONAL

OPTIONAL

OPTIONAL

OPTIONAL

OPTIONAL

OPTIONAL

OPTIONAL

OPTIONAL

OPTIONAL

OPTIONAL

OPTIONAL

OPTIONAL

OPTIONAL

OPTIONAL

OPTIONAL

OPTIONAL

OPTIONAL

OPTIONAL

OPTIONAL

OPTIONAL

OPTIONAL

OPTIONAL

OPTIONAL

OPTIONAL

OPTIONAL

OPTIONAL

OPTIONAL

OPTIONAL

OPTIONAL

OPTIONAL

OPTIONAL

OPTIONAL

OPTIONAL

OPTIONAL

OPTIONAL

OPTIONAL

OPTIONAL

OPTIONAL

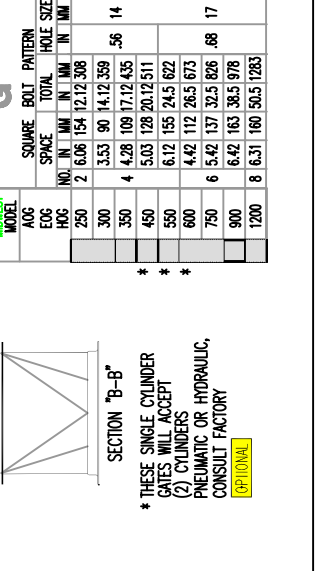
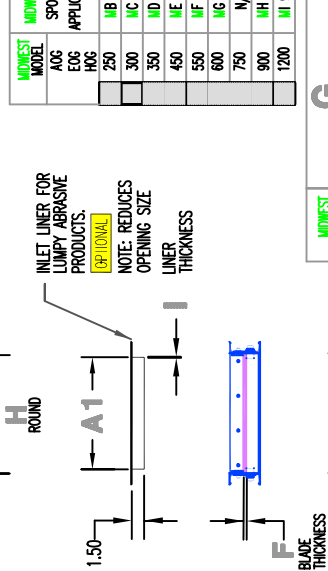
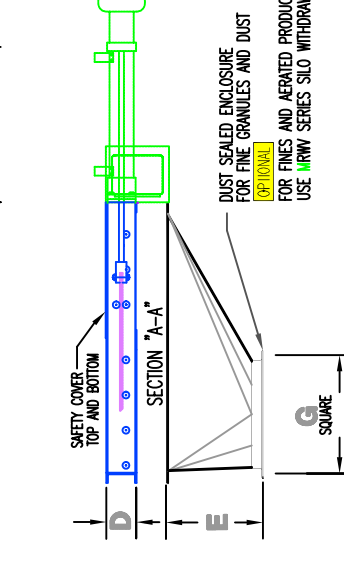
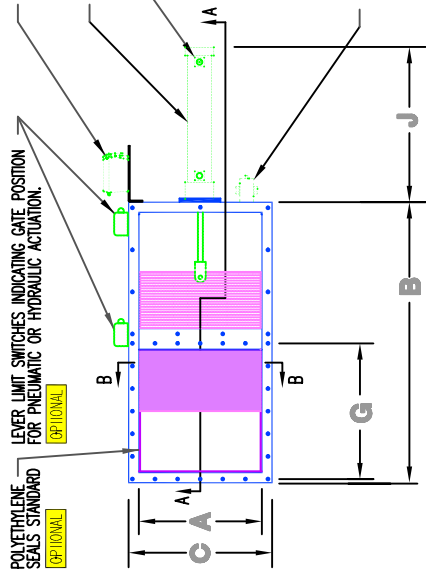
OPTIONAL

OPTIONAL

OPTIONAL

OPTIONAL

OPTIONAL

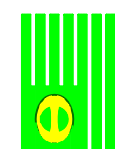


LEGEND

- BLUE: DIKE COMPONENTS
- ORANGE: AIR WITHDRAWAL, I.E. FINE, SAND AND FLOCCLE AFTER SPOUT
- RED: OUTER SWAMPER
- PURPLE: PRODUCT FLOW AREA
- GREEN: INSTRUMENTATION AND UTILITIES
- BLACK: OTHER

MIDWEST MODEL	AOG	EOG	HOG	A		A1		B	C		D	E	F	G	H	I	J	K	L	M	N	O	P	Q	R	S	T	U	V	W	X	Y	Z																						
				NO.	SPACE	NO.	SPACE		FRAME HEIGHT	ENCLOSURE HEIGHT																								BLADE THICKNESS																					
250	18	16	10	254	8.50	216	26.82	727	13.44	341	9	229	3.25	83	200	51	1.00	25	2000	907	3.0	2.2	1	1.5	2	93	42	2	3	117	53	4	3.6	139	63	9	4.3	170	77	11	4.8	311	141	8	6	527	239	9	7.4	685	311	12	10	1241	563

MIDWEST MODEL	AOG	EOG	HOG	A		A1		B	C		D	E	F	G	H	I	J	K	L	M	N	O	P	Q	R	S	T	U	V	W	X	Y	Z																																
				NO.	SPACE	NO.	SPACE		FRAME HEIGHT	ENCLOSURE HEIGHT																								BLADE THICKNESS																															
300	18	22	12	305	10.50	267	31.76	807	15.44	392	4	102	13	330	375	9.5	17.5	145	185	470	22	559	75	18.1	32.5	626	1.00	25.4	2000	907	3.0	2.2	1	1.5	2	93	42	2	3	117	53	4	3.6	139	63	9	4.3	170	77	11	4.8	311	141	8	6	527	239	9	7.4	685	311	12	10	1241	563



AN AIR ECOLOGY COMPANY

MIDWEST International
 Environmental Equipment for industry

Operational Headquarters
 Midwest Plaza, 105 Stover Rd.
 Charlevoix, Michigan 49720

Phone (231) 547-4000
 Fax (231) 547-9453

a division of
 ron pair enterprises, inc.

REF. SERIAL NO. JOB NO. SHEET NO. DRAWING NO. 7001-A

PREPARED FOR: P.O. NO. TITLE: DRAWN: KC DATE: 07 FEB 00

DATE: CHECKED: RP/REM

This drawing and/or publication represents proprietary article and the designs, trade names or trademarks therein are either patented, have patents pending or are copyrighted internationally. Information appearing on this document remains the property of Ron Pair Enterprises, Inc. and is not to be reproduced without written authorization from an officer of this corporation.

REVISION	
NO.	DATE: