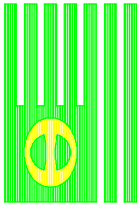


MIDWEST ARTICULOADER™ II

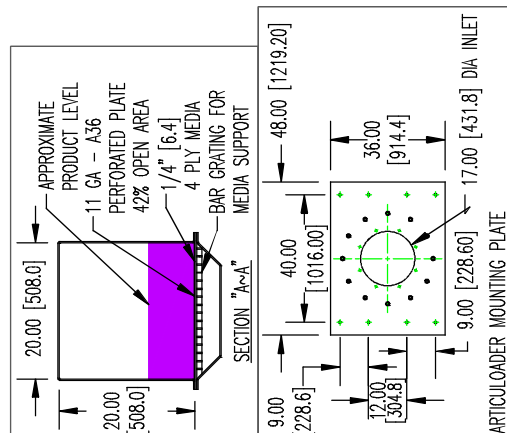
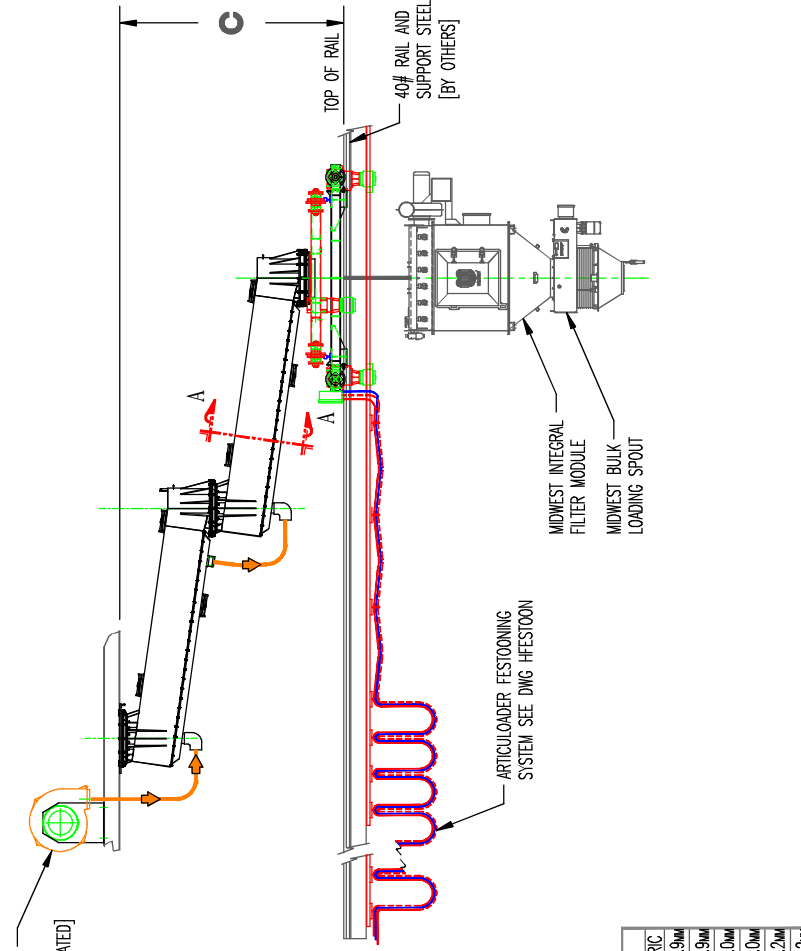
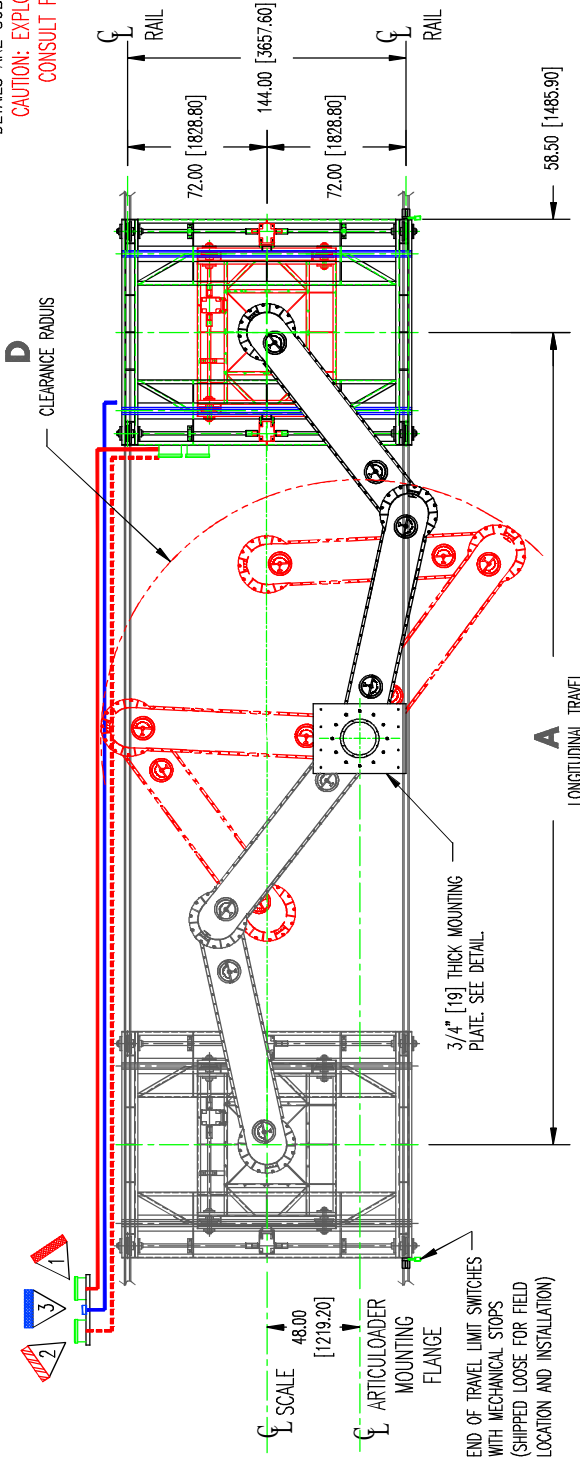
DETAILS ARE SUBJECT TO CHANGE WITHOUT PRIOR NOTICE.
**CAUTION: EXPLOSION PROOF CONSTRUCTION AVAILABLE.
 CONSULT FACTORY FOR DETAILS AND PRICING**



AN AIR ECOLOGY COMPANY

SINGLE POINT FIELD UTILITY CONNECTIONS
PRIMARY POWER [CUSTOMER TO SPECIFY]
SECONDARY CONTROL [CUSTOMER TO SPECIFY]
DRY INSTRUMENT AIR 26 CFM @ 80-100 PSIG @ -40°F
FIELD MECHANICAL INTERFACE SYMBOL

* DESICCANT DRYER RECOMMENDED



MODEL	A		B		C		D	
	ENGLISH	METRIC	ENGLISH	METRIC	ENGLISH	METRIC	ENGLISH	METRIC
WAL500	15ft	4.6m	N/A	91.25in [2317.8mm]	83.5in	2120.9mm	83.5in	2120.9mm
WAL500/180	15ft	4.6m	6ft	101.5in [2578.1mm]	83.5in	2120.9mm	83.5in	2120.9mm
WAL1000	35ft	10.7m	N/A	105.75in [2686.1mm]	135.0in	3429.0mm	135.0in	3429.0mm
WAL1000/180	35ft	10.7m	6ft	116.0in [2946.4mm]	135.0in	3429.0mm	135.0in	3429.0mm
WAL1500	50ft	15.2m	N/A	117.75in [2990.9mm]	178.0in	4521.2mm	178.0in	4521.2mm
WAL1500/180	50ft	15.2m	6ft	128.0in [3251.2mm]	178.0in	4521.2mm	178.0in	4521.2mm



Operational Headquarters
 Midwest Plaza, 105 Stover Rd.
 Charlevoix, Michigan 49720
 Phone (231) 547-4000
 Fax (231) 547-9453
 a division of ron pair enterprises, inc.

REF.
 SERIAL NO.
 JOB NO.
 SHEET NO.
 DRAWING NO. MAL-II

PREPARED FOR:
MAL ARTICULOADER™ II
 TITLE: BULK LOADING SPOUT POSITIONER
 DRAWN: BW DATE: 30 JAN 13 CHECKED: WP

This drawing and/or publication represents proprietary article and the designs, trade names or trademarks therein are either patented, have patents pending or are copyrighted internationally. Information appearing on this document remains the property of Ron Pair Enterprises, Inc. and is not to be reproduced without written authorization from an officer of this corporation.

REVISION	
NO.	DATE: